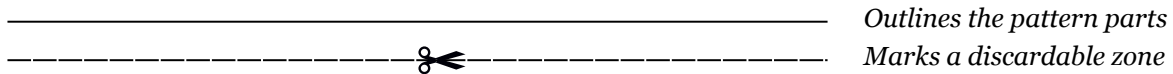


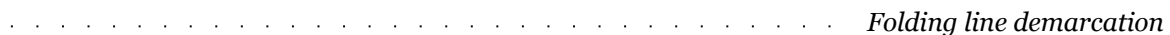
## ***First off, thanks for purchasing this pattern!***

- Print this pattern using the US Letter type format regardless of what type of paper you are using and make sure that you disable the page margins from the printing options before you start so that the pattern will print at a 1:1 scale.

- The parts outlined with a simple line and filled with a gray shade need to be cut out and assembled together after trimming the areas marked with a dashed line and a scissor. Ex:



- The dotted lines represent areas where the leather needs to be folded. Not to be confused with the hollow circles which demarcate rivet holes or stitching holes that are to be punched out. Ex:



- The puzzle piece that you may encounter is there for making sure you are aligning the right pieces in their proper order:



- The outlined circles need to be punched out and the size of the holes will be left out to your preference depending on what type of accesories or tools you are planning to use ( rivets, needles, snap fasteners, stitching punches, hole punches, etc ). Ex:



- Measure the small ruler situated on each page and make sure it's not smaller nor larger than your instrument of measure:



- Each part of the project is assigned a number however these parts are represented using a letter as well. For example ( 1a, 1b, 1c ) make up the same part while the letters are there only to hint at the order of assembly which will always be alphabetical, from left to right.

- Numeral numbers represent the steps you need to take towards completing the project. Ex: (I) means that you should begin with that operation, (IV) marks the fourth step to be followed and so on.

## ***Required materials***

*For this project you will need some 2 mm ( ~ 6 oz ) vegetable tanned leather, four 9 mm rivets, 8 eyelets ( grommets ) of your choice in size and a 14 mm inner size buckle.*

## ***Printing guidelines***

*Print the pattern in the US Letter format and make sure you check the 'Fit to page' button or depending on your printing medium, 'Disable page margins'. If you're not from the US you may print this pattern on A4 paper without any issues, just make sure that you select the proper format ( US Letter ) when printing. The idea is to print the pattern on the whole page and not fit it to the printable area. This way we ensure that every part will be printed at a 1:1 scale. If you haven't ever used these settings when printing then be sure to print a test page before printing the whole pattern. Also keep in mind that names for the printing settings may vary between the many different types of software out there even though they all lead to the same results.*

## ***Preparing the pattern***

*The way I proceed when cutting the paper parts is to loosely cut around their contours and use them afterwards to mark the leather parts that need to be cut from the larger leather sheets. Make sure to join the parts that display half of a puzzle piece as mentioned in the first page and don't forget to measure the 2 inch reference ruler situated on every pattern page just to make sure you printed the pages using the right settings.*

## ***Preparing the leather parts***

*After loosley cutting the paper and leather parts I then strap them on top of each other using adhesive tape to tightly fit the paper parts on top of the*

*leather ones. This helps a lot when punching out the stitching holes and cutting out the parts. Make sure to firstly punch out every hole that needs to be punched before proceeding to cutting out the actual parts as doing it the other way around will make things harder. Also make sure you use a sharp blade as cutting through paper and leather at the same time tends to rip the paper a bit, especially the low quality type. If you wish to dye and condition your leather and alternatively prepare the edges in case you used thicker leather, then this is the right moment.*

*Don't forget to check [our page](#) or [our Etsy shop](#) from time to time as we try to come up with new stuff all the time. Also joining our [Facebook community](#) and subscribing [to our YouTube channel](#) will keep you up to date with our work. Thanks!*