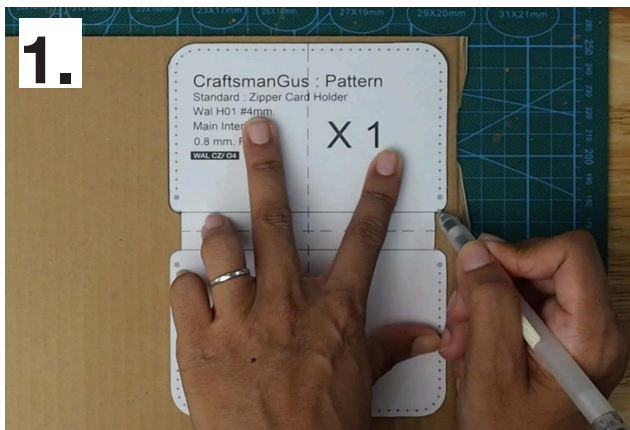


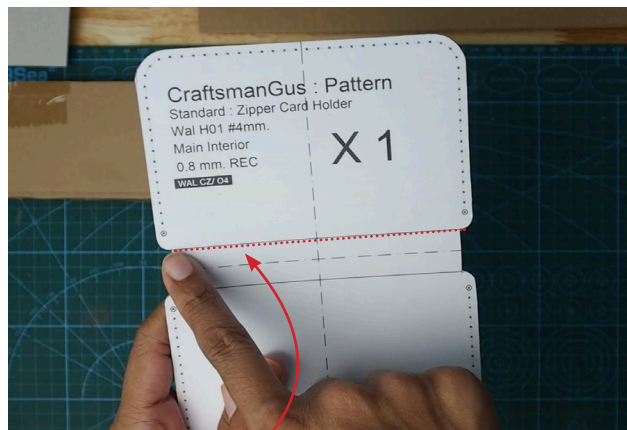


Card Zipper Wallet

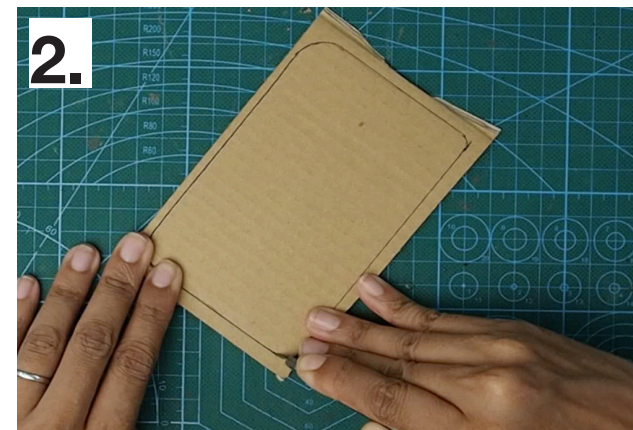
INSTRUCTION DIY ZIPPER TOOL



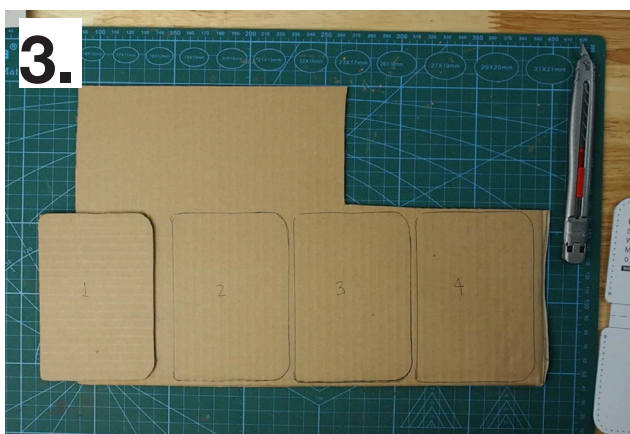
Trace the "Main Interior" pattern to the card board



Trace line stops here



Cut out 6 pieces of card board (use the card board with thickness of 2-3 mm or 1/8 inch)



Seperate 4 pieces of card board for the outter part of this zipper tool



For the other 2 pieces of card board:
- measure the divider to 3 mm or 1/8 inch
- use the divider to draw around the card board



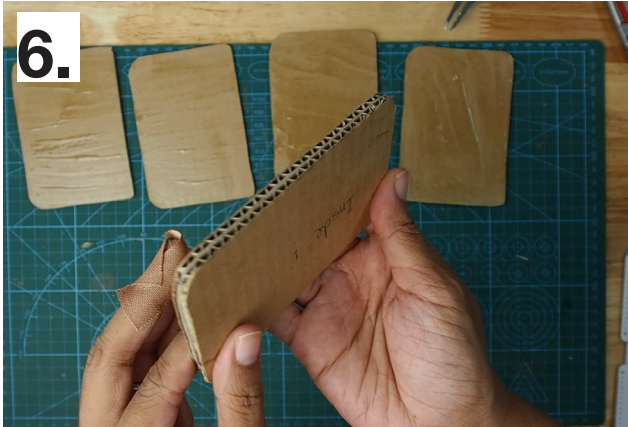
Cut along the line drawn by divider of the 2 card boards (this will be the inside part of the zipper tool)



Card Zipper Wallet

INSTRUCTION

DIY ZIPPER TOOL



Glue the 2 inside pieces together



Glue/ combine 2 pieces of the outter part into 1



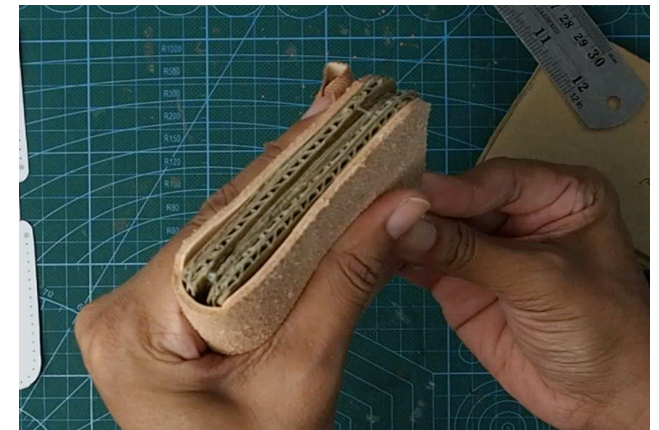
You will end up with 2 pieces of outter part and 1 inner part



Glue the inner part in the middle of the out part of the zipper tool



The over all thickness should be aprox. 1.4 cm or 9/16 inch, the inner area should measure aprox. 0.5 cm or 3/16 inch



This zipper tool will help keep the leather and zipper in shape when installing the zipper