

Harlots and Angels
CABINET OF CURIOSITIES
SEWING PATTERNS

Explorer Corset

PDF
DOWNLOAD

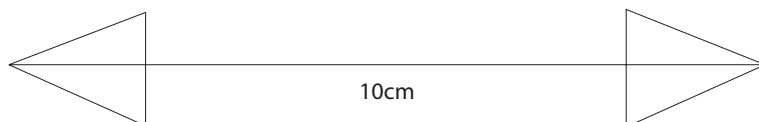
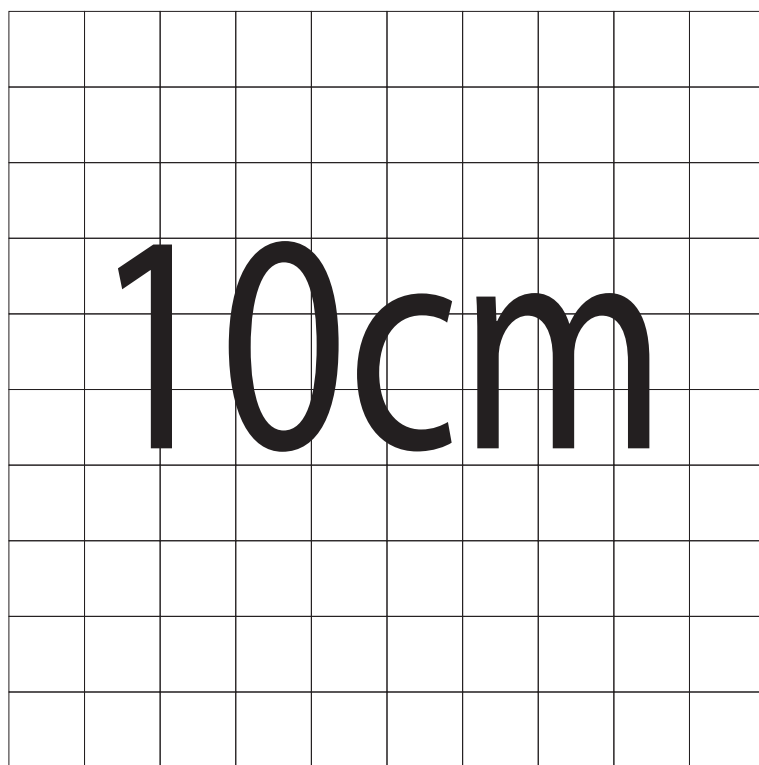


SIZE SMALL 20" 22" 24" FINISHED CORSET WAISTS

WWW.HARLOTSANDANGELS.CO.UK

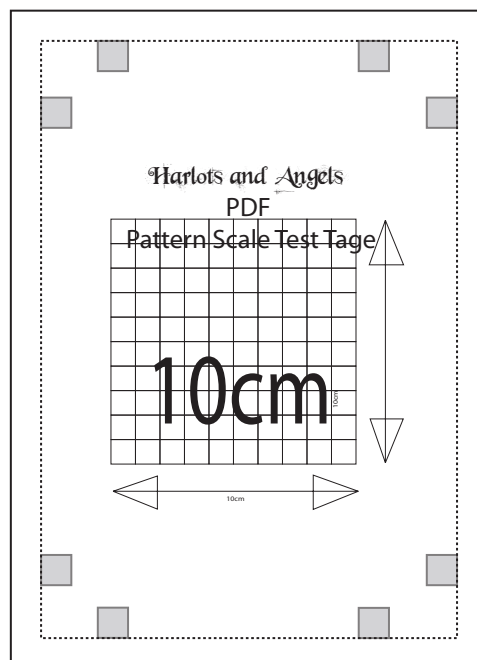
©Harlots&Angels 2014

Harlots and Angels
PDF
Pattern Scale Test Page

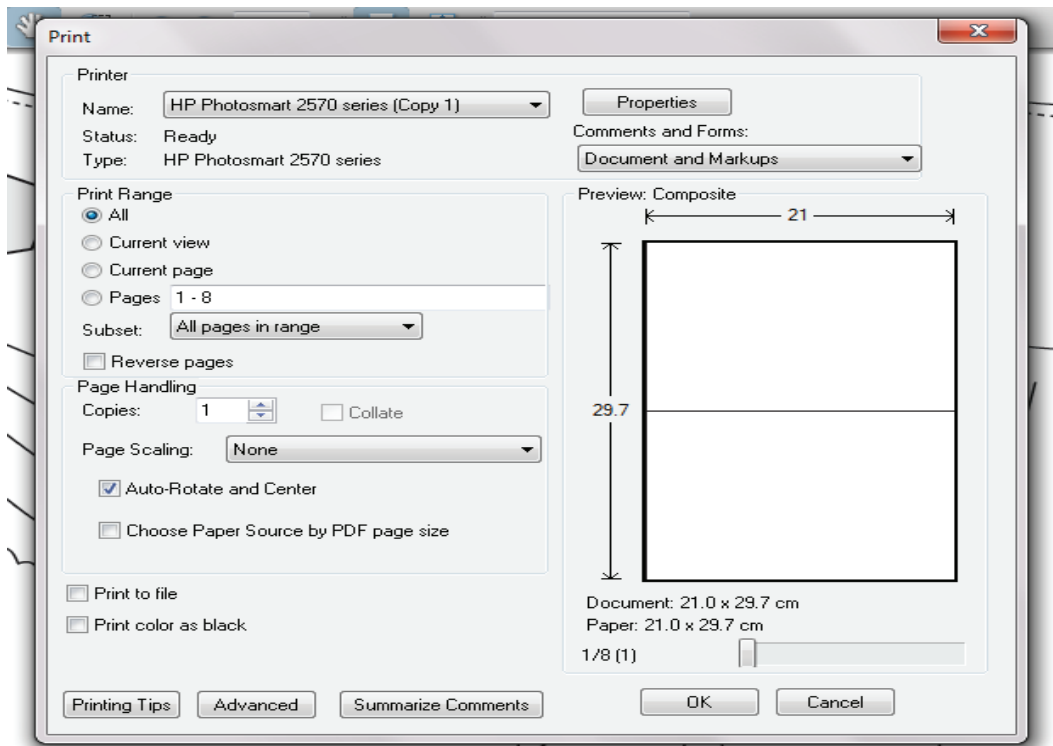


Please follow these Instructions when printing your Harlots and Angels pdf patterns.

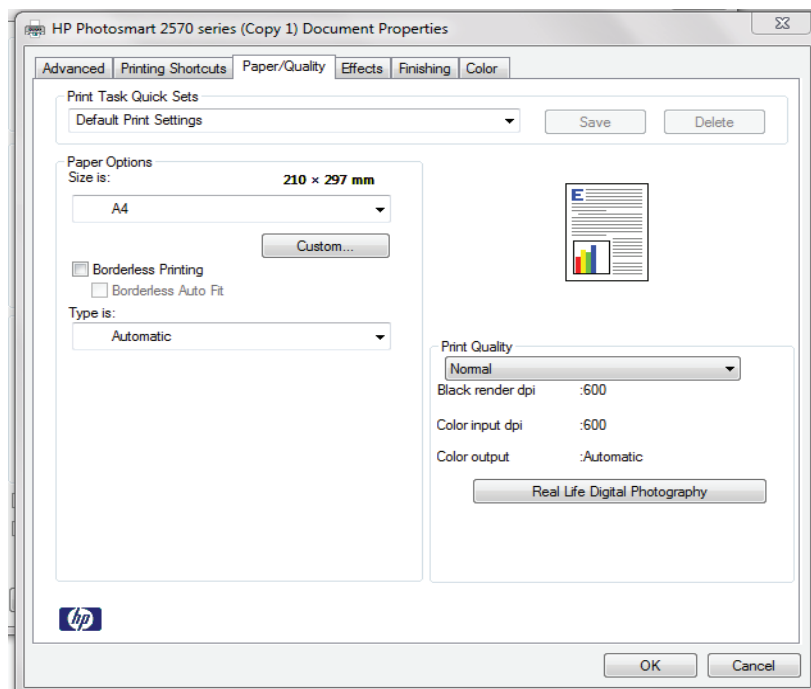
Checking the Scaling of your pattern before printing
1. Always locate and print the test page first to check the scale.



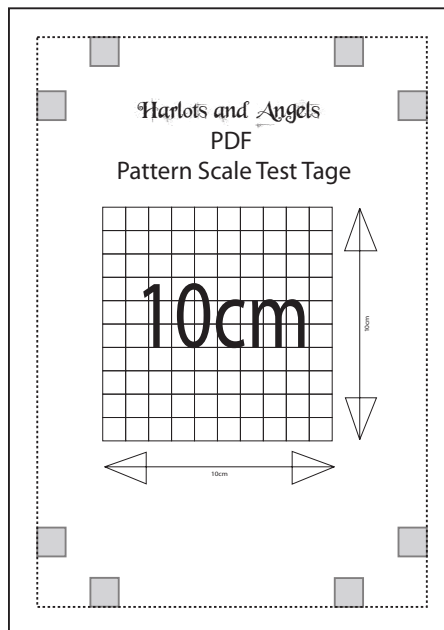
2. Go to file > print. Or click the print icon.



3. Set paper size to A4 (210mm x 290mm). Set orientation to 'Portrait'. In the print dialog box check that the 'PAGE SCALING' is turned off or set to actual size or 100%. Turn on or click the 'AUTO ROTATE AND CENTRE'.

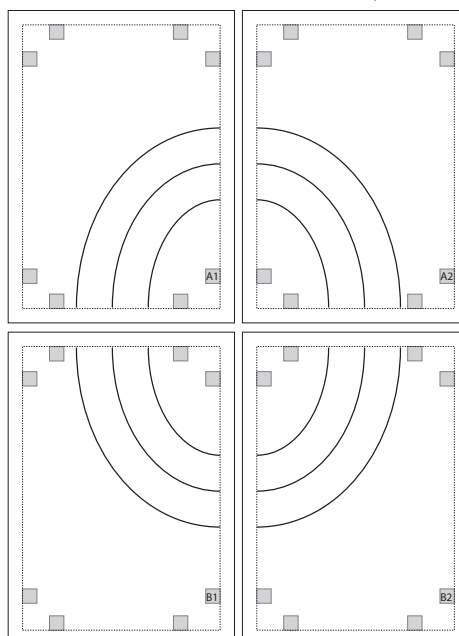


4. Click ok and print the test page. Check the page has the border all the way around and the eight size alignment boxes printed ok. Measure the 10cm size box to check it is correct. If the scale is not correct you have an error in your print settings. Check print settings and page scaling again and reprint test page.

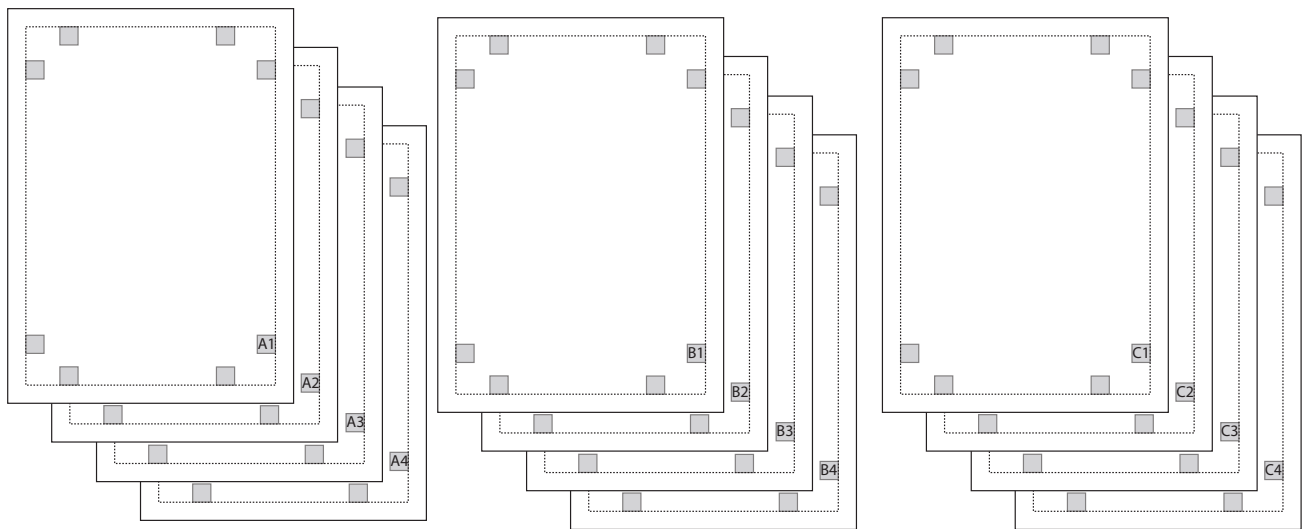


How to assemble your Harlots and Angels PDF pattern

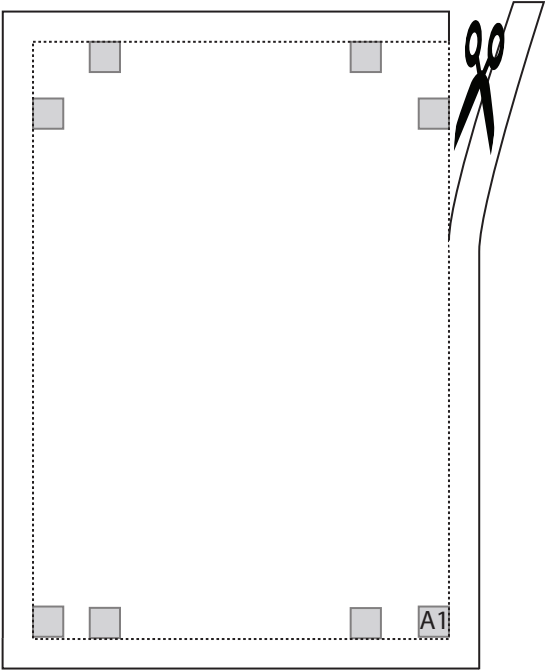
1. Each pattern piece will have a letter and number in the bottom right alignment square, eg `A1' in the first piece of the top row. Each row has the next letter. So if your pattern has 4 rows there will be the letters A, B, C, D with numbers indicating how many pages in each row.



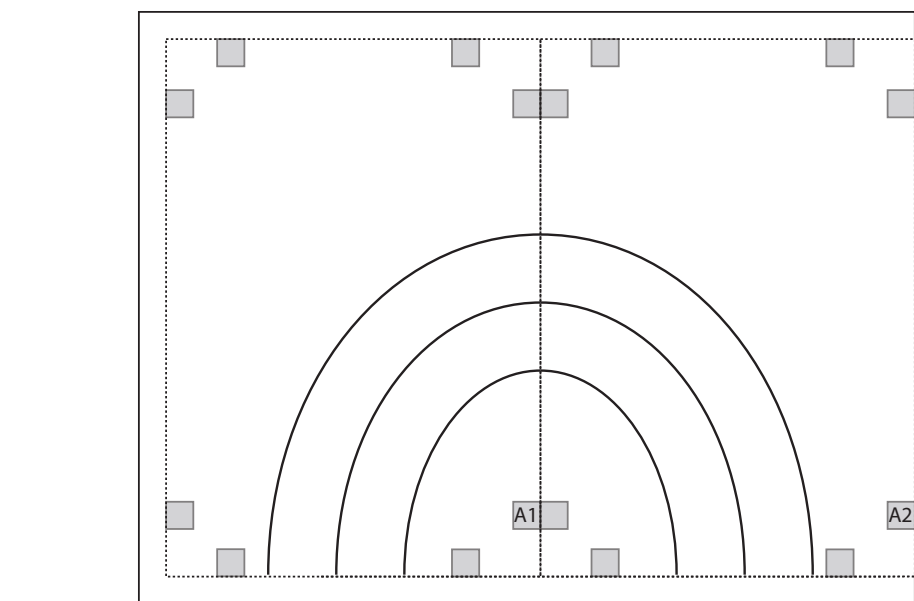
2. Sort the pages into sets of letters and put them in numerical order.



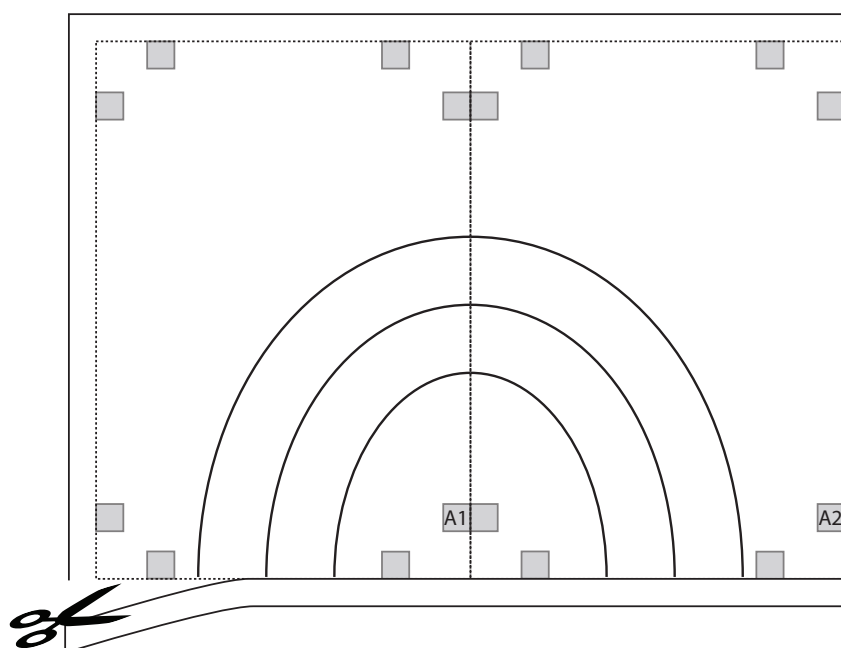
3. Now trim with scissors, guillotine or rotary blade cutter ONLY the right long side or each pattern piece, cutting along the faint grey dotted line that has the alignment squares attached.



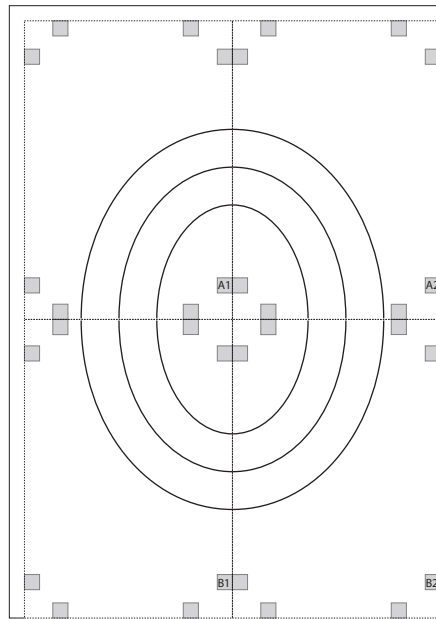
4. Overlap and tape each piece of the same lettered rows, making sure the alignment squares sit perfectly level and square to each other along the joins.



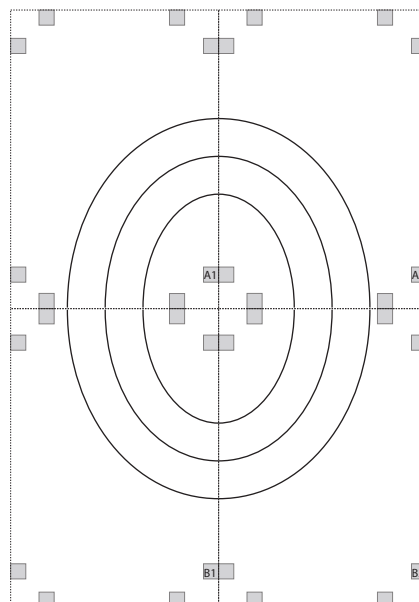
5. You should now have rows with only the same letter in them. Take the first row 'A' and trim along the bottom trim line. Repeat for the other rows ONLY trimming the bottom off each row.



6. Overlap bottom of row `A' onto top of row `B' and tape.
Continue until the pattern is complete.



7. Make sure the joins are perfectly aligned and taped down.
Now you can cut the pattern out as usual and start sewing.



MATERIAL REQUIREMENTS

This pattern takes several different materials and tools to complete.

0.75 metres 3/4 yard outer fabric, middle lining (lightweight cotton) and main lining, coutil or cotton drill NON STRETCH

Small piece of faux leather or real leather for hip vents

Optional contrast piece for centre front panel 25cm x 33cm
Sheet bondaweb or similar (double sided iron on fabric bond).

Steel boning and spiral bones:

flat steel

2 x 12mm x 23.5cm

2 x 12mm x 24cm

4 x 28 -29cm

spiral bones

2 x 10 or 12mm 27cm

4 x 10 or 12mm 26cm (6 for extra large size)

2 x 25cm long 12mm x 25cm rigilene plastic boning

44-46 two part eyelets

4 x 38mm 1 1/2" D rings

min 22 rivets and caps and setting tool

3mm hole punch

Lacing cord approx 4 -5 metres for back and 75cm each hip vent

Piece buckram 29cm x 37 cm or thick denim/ canvas

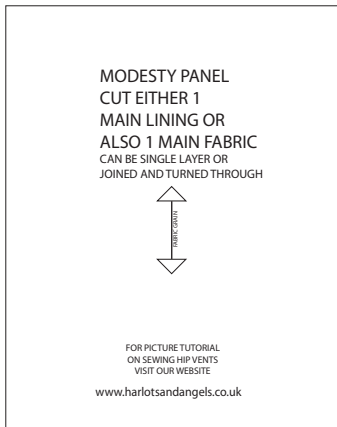
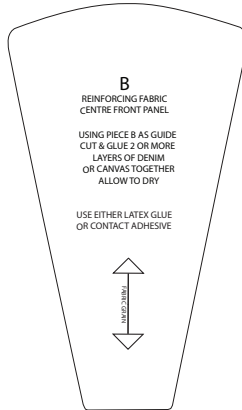
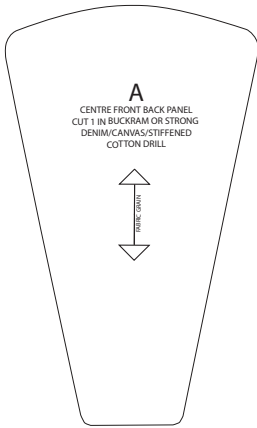
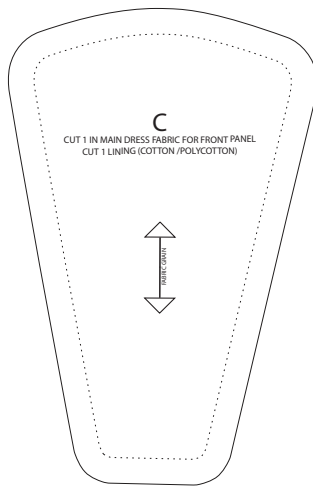
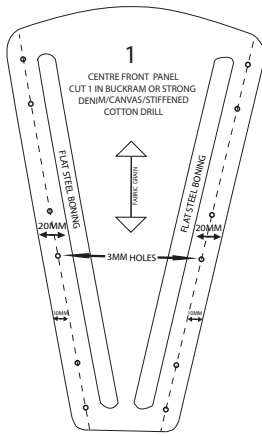
Denim/ canvas thick cotton drill 1/4 yrd .25 metre

Strong sewing thread size 12, and 16 or 18 machine needle

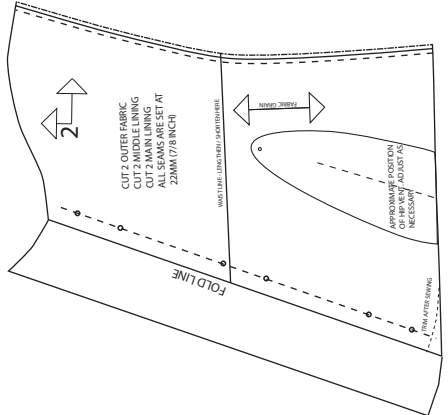
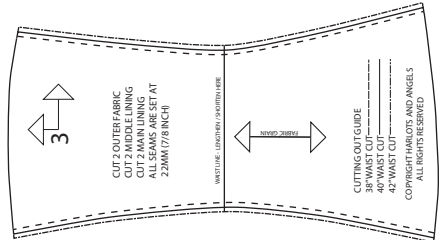
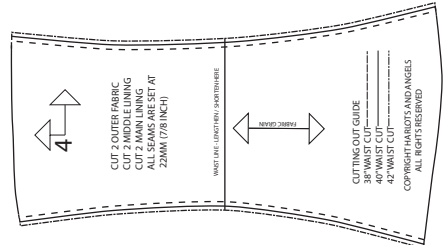
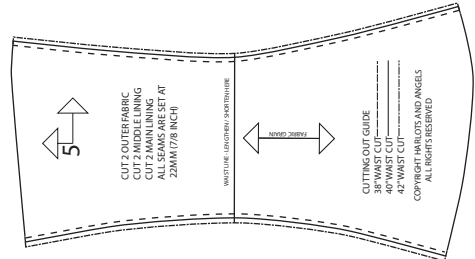
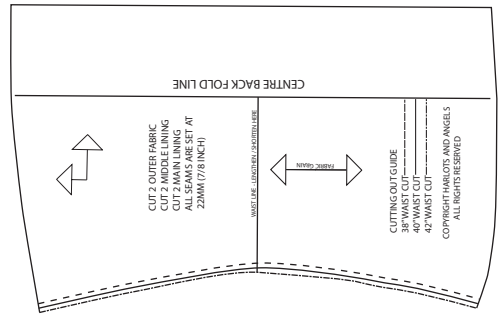
PVA glue, contact adhesive and or latex glue

reinforcing strips for beind swing clips and eyelets

38mm 1 1/2" petersham tape x 55cm



FOLDED EDGE 48" (120CM) WIDE FABRIC



FOR PICTURE TUTORIAL
ON SEWING HIP VENTS
VISIT OUR WEBSITE
www.harlotsandangels.co.uk

FAUX LEATHER OR LEATHER
CUT 2 OF EACH

COPYRIGHT HARLOTS AND ANGELS
ALL RIGHTS RESERVED

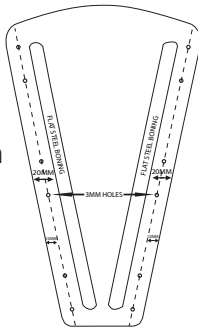
COPYRIGHT HARLOTS AND ANGELS
ALL RIGHTS RESERVED

COPYRIGHT HARLOTS AND ANGELS
ALL RIGHTS RESERVED

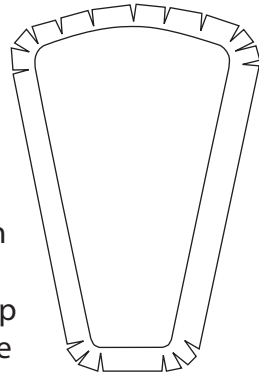
COPYRIGHT HARLOTS AND ANGELS
ALL RIGHTS RESERVED

COPYRIGHT HARLOTS AND ANGELS
ALL RIGHTS RESERVED

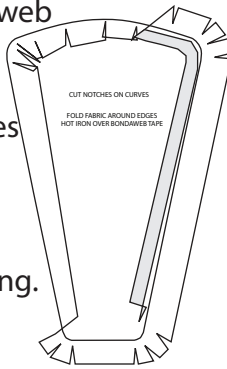
1. Glue the the centre front pattern pieces no 1 and 'A' to thin card like a cereal box. This will make them durable and much easier to work with. Punch holes for the rivets with 3mm punch. Cut out both pieces in buckram or a strong denim/ canvas stiffened with pva glue and dried. This front panel takes some practice to get the right stiffness needed. Don't rush the process.



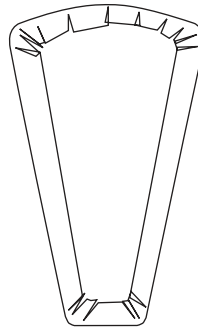
2. Next cut out your outer dress fabric and back lining. Using sheet bondaweb (double sided fusible). iron with hot dry iron to your buckram / canvas front and back. I always starch my fabrics before bonding as it makes them easier to work with and gives a superior finish. Turn over and snip curves not going to close to edge of panel.



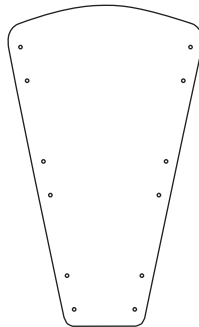
3. Using either thin strips of bondaweb or glue, (latex or contact) turn raw edges over and seal down. make sure you ave tight clean edges and size stays true to template. be aware bulky fabrics may add to size and rivet hole placements will need adjusting. repeat for back lining. The back piece is a fraction smaller so it will sit neatly behind when finished.



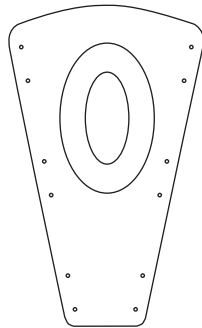
4. Showing the front and back panels from wrong side when fabrics are fully covering them.



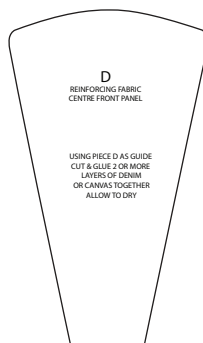
5. Turn front piece no 1 to right side and mark for rivet holes. make sure your marked won't bleed on the fabric. DO NOT make holes yet.



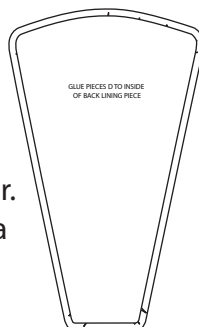
6. Apply your decoration to the centre front now, unless it is a larger piece you want to rivet on later. In this case you must note where the steel bones will sit to enable you to punch through all layers.



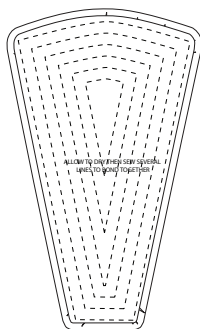
7. Piece D is template for the inside linings. Cut at least 2 from denim or canvas. If using a drill type then use more layers. use a contact adhesive or latex glue. bond the layers together and leave to dry completely or you may damage sewing machine.



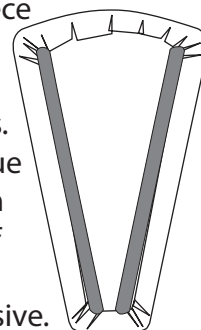
8. Lay piece D onto wrong side of 9 centre back piece A. Check it sits approximately 6-8mm from the edge of back piece A. using contact adhesive glue both sides and when tacky press together. Lay heavy weight on top to ensure a good bond.



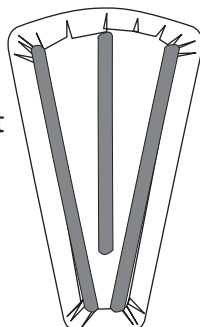
9. On the back panel sew several quilting style rows to fully secure lining to buckram / canvas.



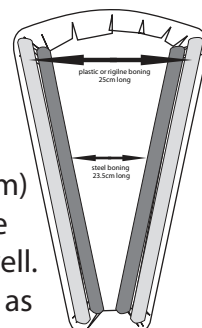
10. Take great care with front piece 'A' that the bones are placed accurately. You need 2 x 12mm x 235mm flat sprung steel bones. refer to pattern template and glue bones to wrong side 20mm from edges. it should not be on top of folded edges but lay next to it. use hot glue gun or contact adhesive. make sure bone ends are sealed.



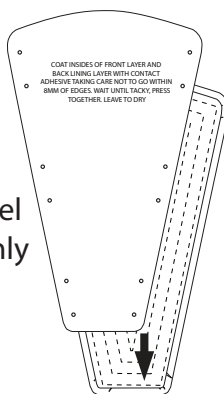
11. If you want and depending on thickness of materials used you can glue a third shorted bone in centre for extra support. always think about any fixings you may want to attach when finished.



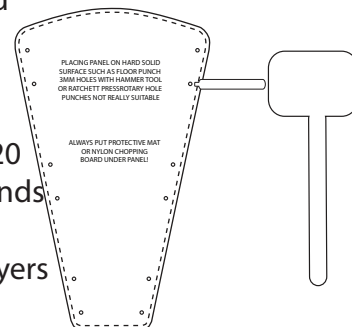
12. Now to fix the 2 plastic bones to outer edge. I use 10 or 12mm wide rigilene boning that I can easily punch holes through later. Cut lengths (no longer than 250mm) Glue these down with contact glue making sure the ends are sealed well. I actually seal ends with superglue as the strands never move. weight down leave to dry.



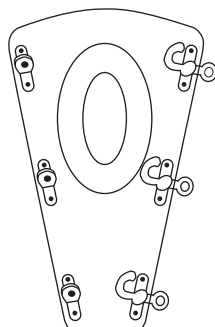
13. Next apply contact adhesive to wrong sides of front and back. Do not glue right to very edge where you will sew around. when glue is tacky press together and feel down next to the bones. press firmly until stuck then weight down.



14. When dry topstitch around the edge on panel. Use at least size 16 / 18 needle and you may need 75 thick thread rather than 120 dressmaking thread. depends on the machine. Punch holes through all layers for rivets to fix swing clips. Hammer and hand punch work the best. 3mm holes.



15. Lastly set the clips in place with rivets and appropriate tool. I use a 11mm long stem rivet and 3mm wide with either 7mm or 9mm caps.

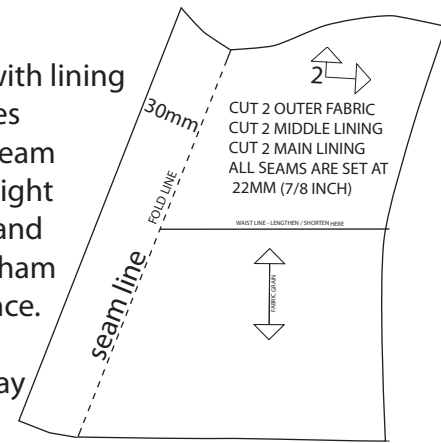


NOTES:

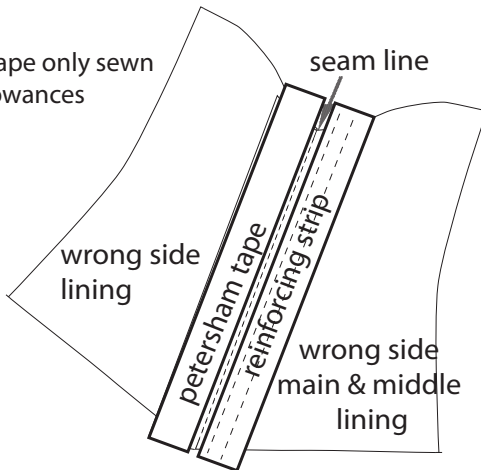
Always use Contact adhesive in well ventilated area. Test scrap fabrics with glue before using on main. Hand punches and rivet tools are much better than the rotary types. there just isn't good leverage with cheaper rotary punches. hammer tools are cheap on ebay and craft stores. aviation snips are good for cutting steel bones. Curve, file and seal bone ends before using.

16. Cut out pieces 2 to 5 for small size, 2 to 6 for medium//large and 2 to 7 for extra large size. Cut in outer fabric, middle lining and main lining.
lay outer fabric onto middle linings and baste side seams and use as one layer together.

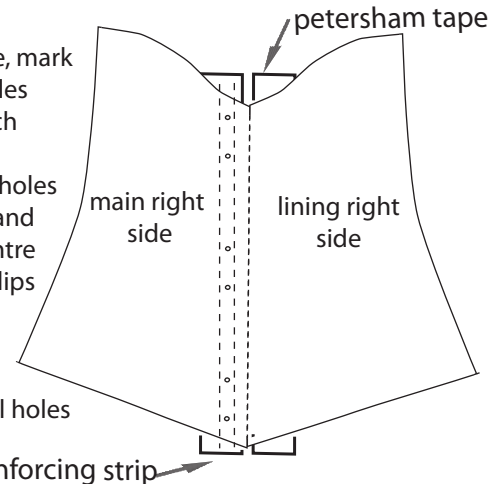
17. Lay no 2 piece with lining on top right sides together. Sew seam 30mm from straight edge. Open up and sew strip petersham to seam allowance. sew reinforcing strip 3-4mm away from seam.



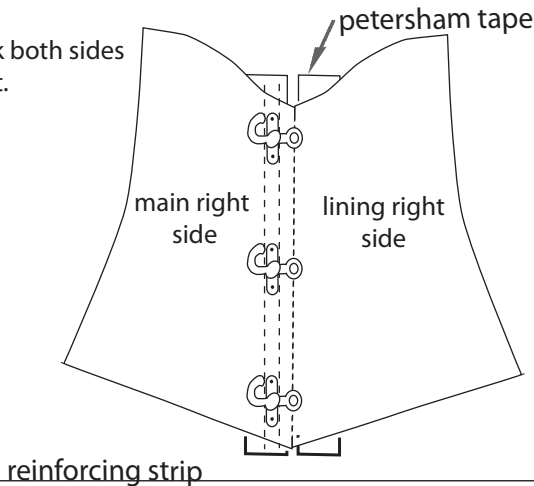
18. Note petersham tape only sewn through seam allowances not lining as well.



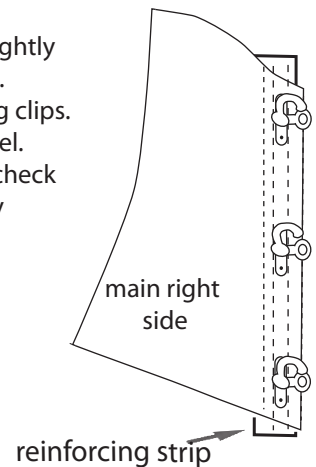
19. Turn to right side, mark placement of holes for rivets to attach swing clips. BEFORE making holes fold lining back and place next to centre front and align clips holes should be correct distance from edge. Punch holes, seal holes with fraycheck.



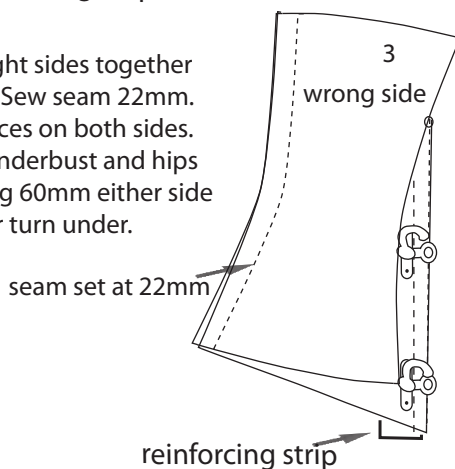
20. Fix rivets. check both sides are aligned first.



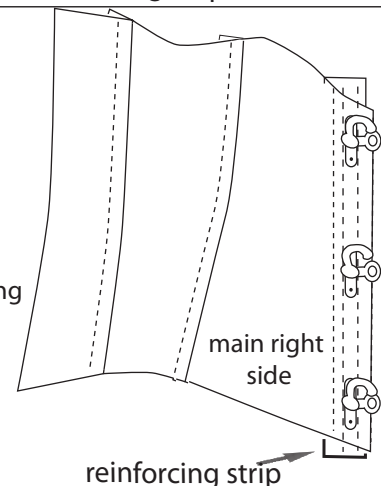
21. Fold lining back, pulling tightly so fold is on edge of seam. sew close to edge of swing clips. This makes a boning channel. repeat for other side and check with centre front that they fit well.



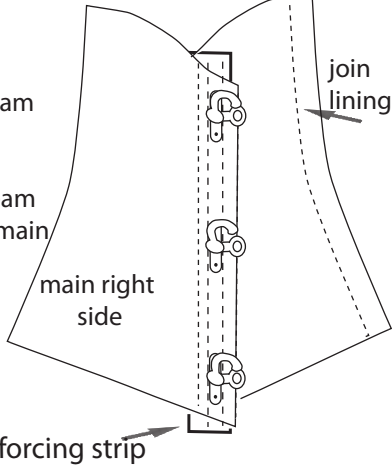
22. Lay no 3 piece right sides together onto no 2 piece. Sew seam 22mm. Repeat for all pieces on both sides. measure waist, underbust and hips of corset. allowing 60mm either side at centre back for turn under.



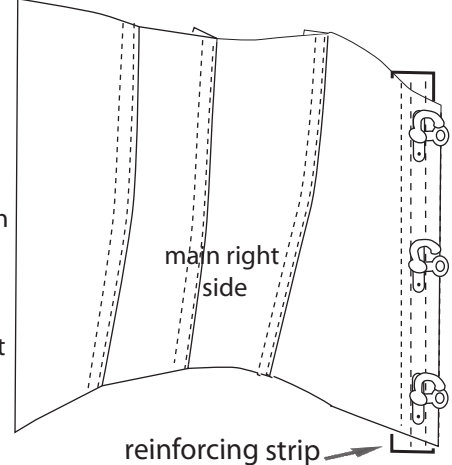
23. When joined and size checked, sew first row of topstitching. sew on right side, always turning seams towards centre back. sew approx 11mm from seam. When finished there will be 3 rows of topstitching to form bone channels.



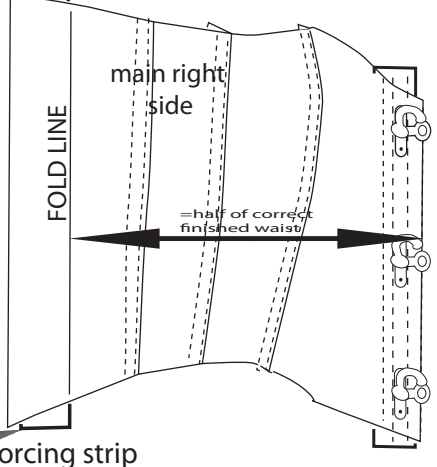
24. When happy with sizing attach main lining, pulling lining back from seam on piece 2 repeat same as for joining main fabric. Check each piece so the seam will lie exactly in line with main corset.



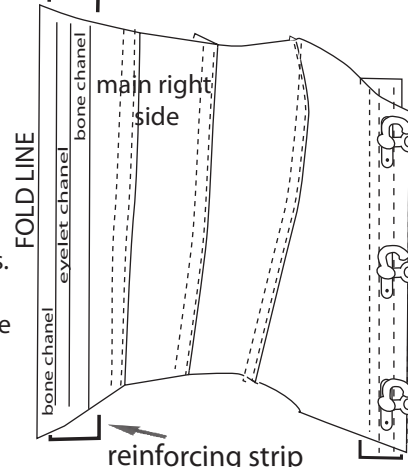
25. When lining is joined and lays well, sewing from right side join to main corset. Start from piece 2, pull evenly underneath to keep tension. Topstitch through all layers close to each seam. Repeat for all seams working towards back.



26. Mark with chalk on wrong side of centre back piece the fold line. This should be approx 60mm from back edge. Pin layers together. Check waist measurement again. Sew 44mm wide reinforcing strip up to this line. turn raw edge under and sew to edge of strip.

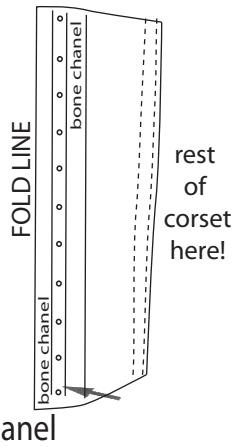


27. Turn reinforcing strip under to wrong side. sew 2 channels. One row close to edge of underlap and the other correct distance so you can fit bone either side of eyelets. repeat for other side. Attach both sides to centre panel and trim top and bottom edges.

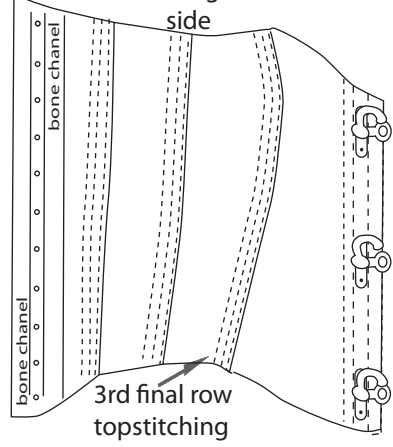


28. Mark for eyelets on the eyelet channel. Punch 3mm holes. set eyelets with correct tool.

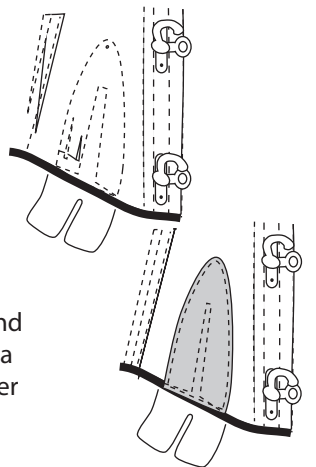
If you want a modesty panel pin one to one side before setting eyelets. baste and sew in place. make sure to sew to correct sde of eyelet channel so it sits neatly behind when laced up!



29. Sew the last row of topstitching along each seam. you will now have 3 rows. The last row forms the bone channels.

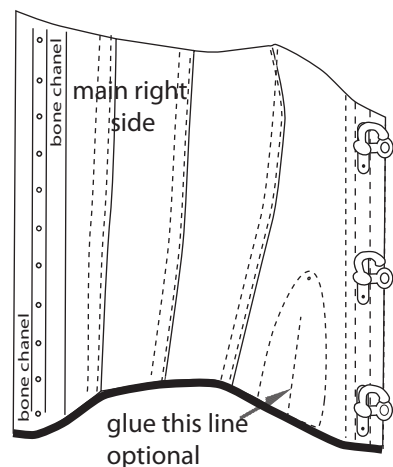


30. Next sew the hip vents into piece 2. Place the back vent on wrong side. Tabs showing at the bottom as shown. stitch around as in diagram. it is essential that the vents are correctly positioned. Place top vent on right side. align with back vent. Take care not to let it move and sew around through all layers. You may find a large needle (16-18) and stronger thread is needed.



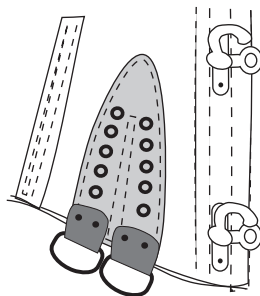
31. Sew bias binding to lower edge on both sides of corset.

Mark guide line for hip vent on wrong side and sew a marker line 5 mm inside the line. I like to apply a line of latex or contact adhesive to the line where vent is cut to prevent fraying.

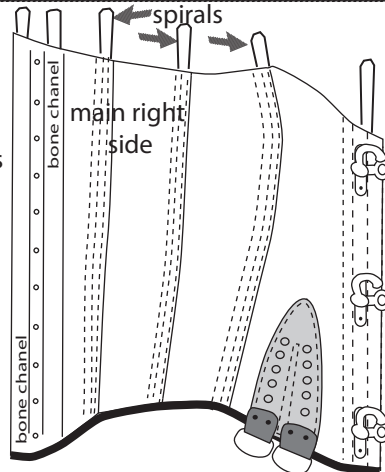


32.

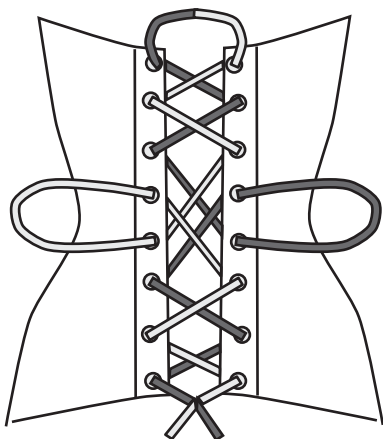
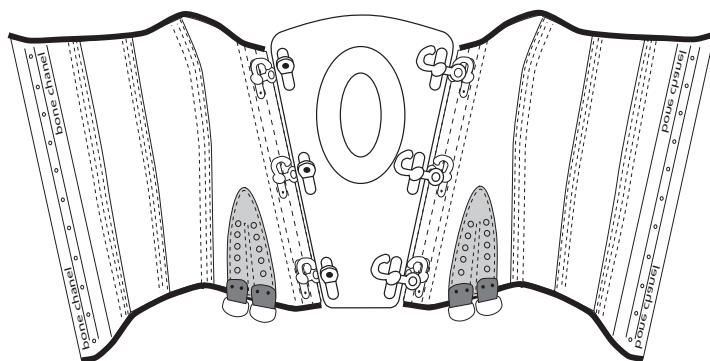
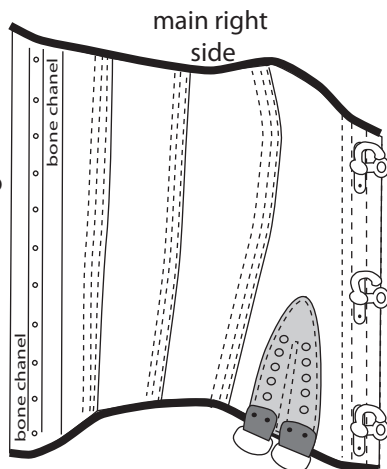
To finish the vents cut up the centre line between the stitch lines. Mark with guide for eyelet holes, punch holes and set eyelets. Fold the lower tabs up over the D rings. Mark position for rivets. Punch holes and set 2 rivets per tab.

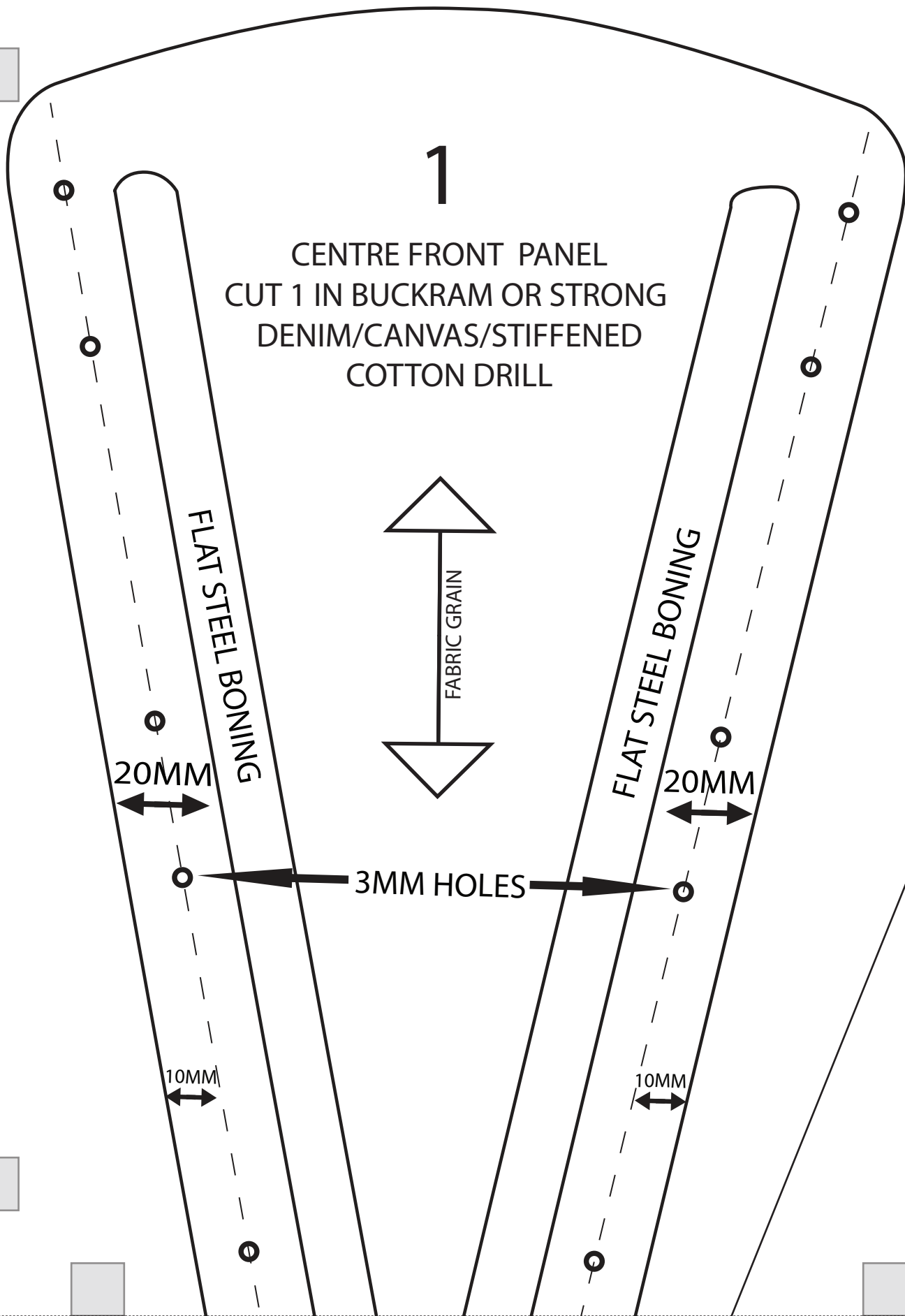


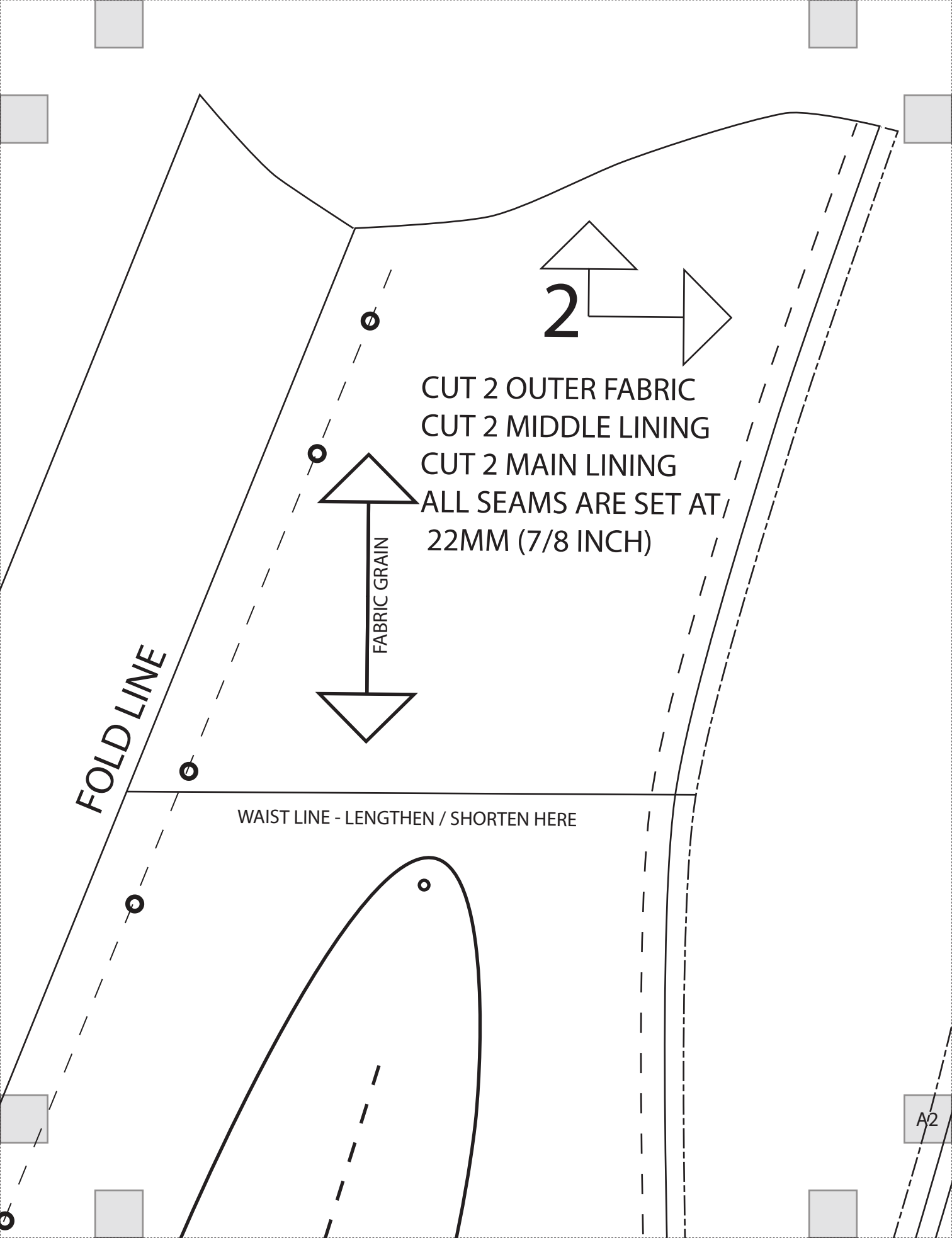
33. Insert the flat bones into the channels. 1 either side of eyelets. 1 behind the swing clips and spirals on each seam.



34. Make sure the bones are pushed down from edge. Sew bias binding to top edges. The corset is now ready to lace up and it is finished.







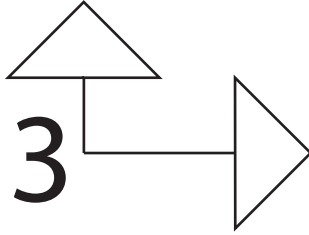
2

CUT 2 OUTER FABRIC
CUT 2 MIDDLE LINING
CUT 2 MAIN LINING
ALL SEAMS ARE SET AT
22MM (7/8 INCH)

FABRIC GRAIN

FOLD LINE

WAIST LINE - LENGTHEN / SHORTEN HERE



CUT 2 OUTER FABRIC
CUT 2 MIDDLE LINING
CUT 2 MAIN LINING
ALL SEAMS ARE SET AT
22MM (7/8 INCH)



WAIST LINE - LENGTHEN / SHORTEN HERE

CUTTING OUT GUIDE

20" WAIST CUT —————

22" WAIST CUT —————

24" WAIST CUT —————



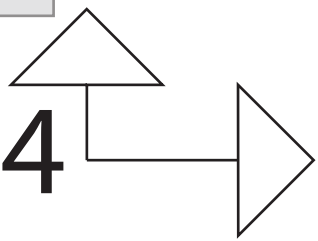
A3
CUT

20"

22"

24"

4



CUT 2 OUTER FABRIC
CUT 2 MIDDLE LINING
CUT 2 MAIN LINING
ALL SEAMS ARE SET AT
22MM (7/8 INCH)

CENTRE BACK FOLD LINE

WAIST LINE - LENGTHEN / SHORTEN HERE

PUTTING OUT GUIDE

WAIST CUT
WAIST CUT
WAIST CUT

MODESTY PANEL
CUT EITHER 1
MAIN LINING OR
ALSO 1 MAIN FABRIC
CAN BE SINGLE LAYER OR
JOINED AND TURNED THROUGH



FOR PICTURE TUTORIAL
ON SEWING HIP VENTS
VISIT OUR WEBSITE

COTTON DRILL

FABRIC GRAIN

B1

TRIM AFTER

APPROXIMATE POSITION
OF HIP VENT. ADJUST AS
NECESSARY

ER SEWING

A

CENTRE FRONT BACK PANEL
CUT 1 IN BUCKRAM OR STRONG
DENIM/CANVAS/STIFFENED

D

CORSET VENT BACK
CUT 2 LEATHER OR
FAUX LEATHER

COPYRIGHT HARLOTS AND ANGELS
ALL RIGHTS RESERVED

COPY
A

B

REINFORCING FABRIC
CENTRE FRONT PANEL

USING PIECE B AS GUIDE
CUT & GLUE 2 OR MORE
LAYERS OF DENIM
OR CANVAS TOGETHER
ALLOW TO DRY

USE EITHER LATEX GLUE
OR CONTACT ADHESIVE

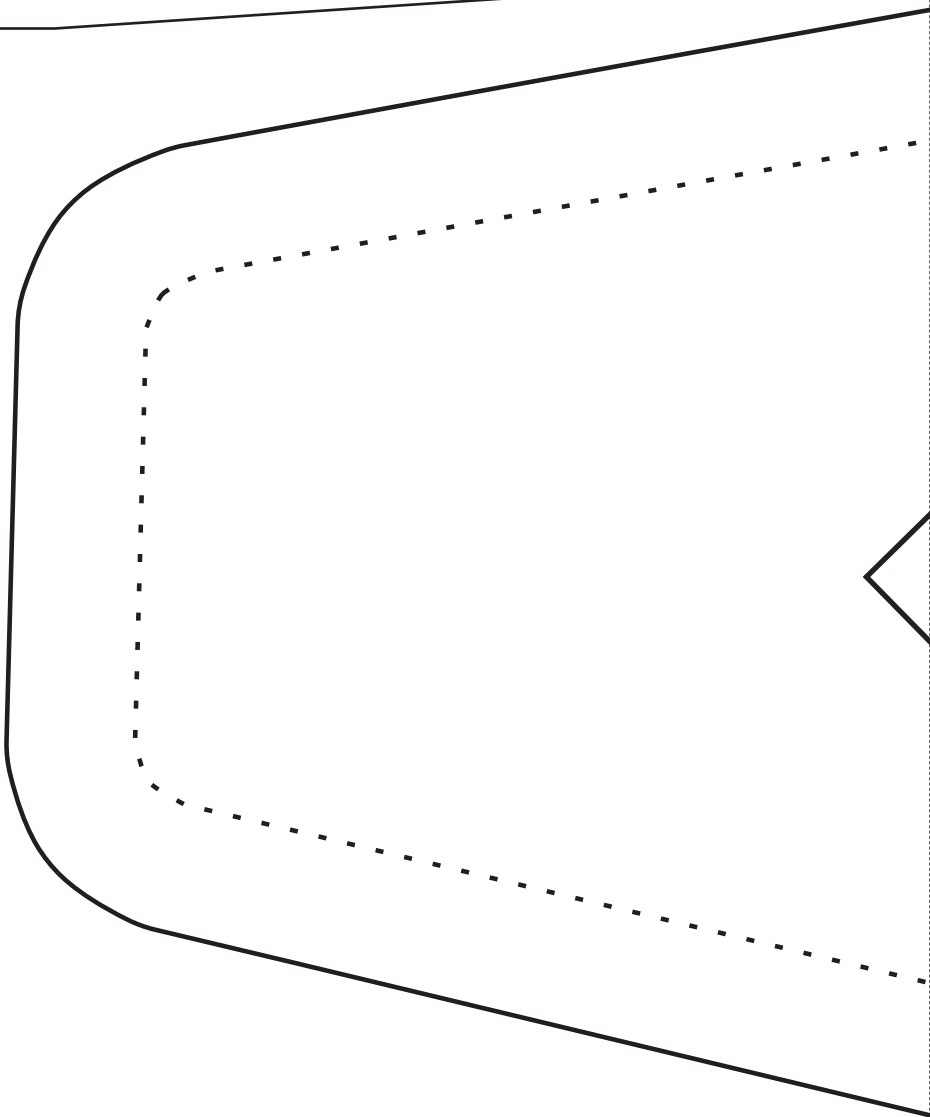
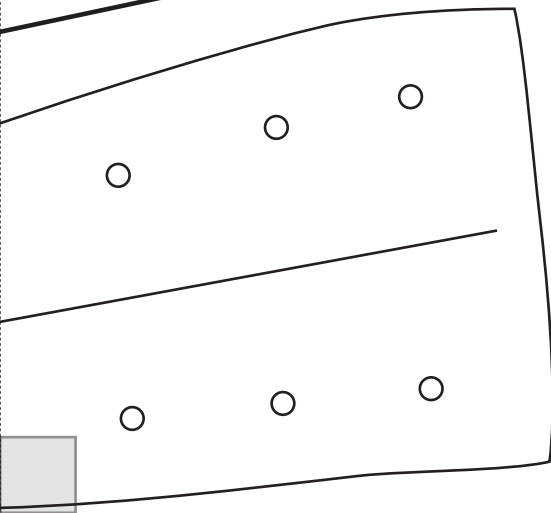
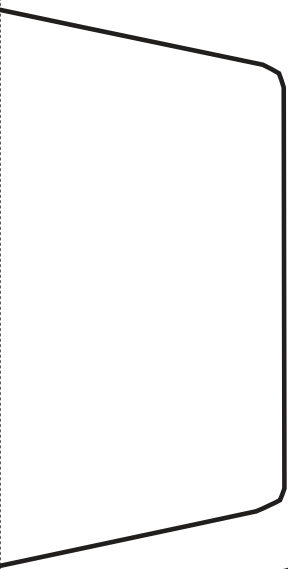


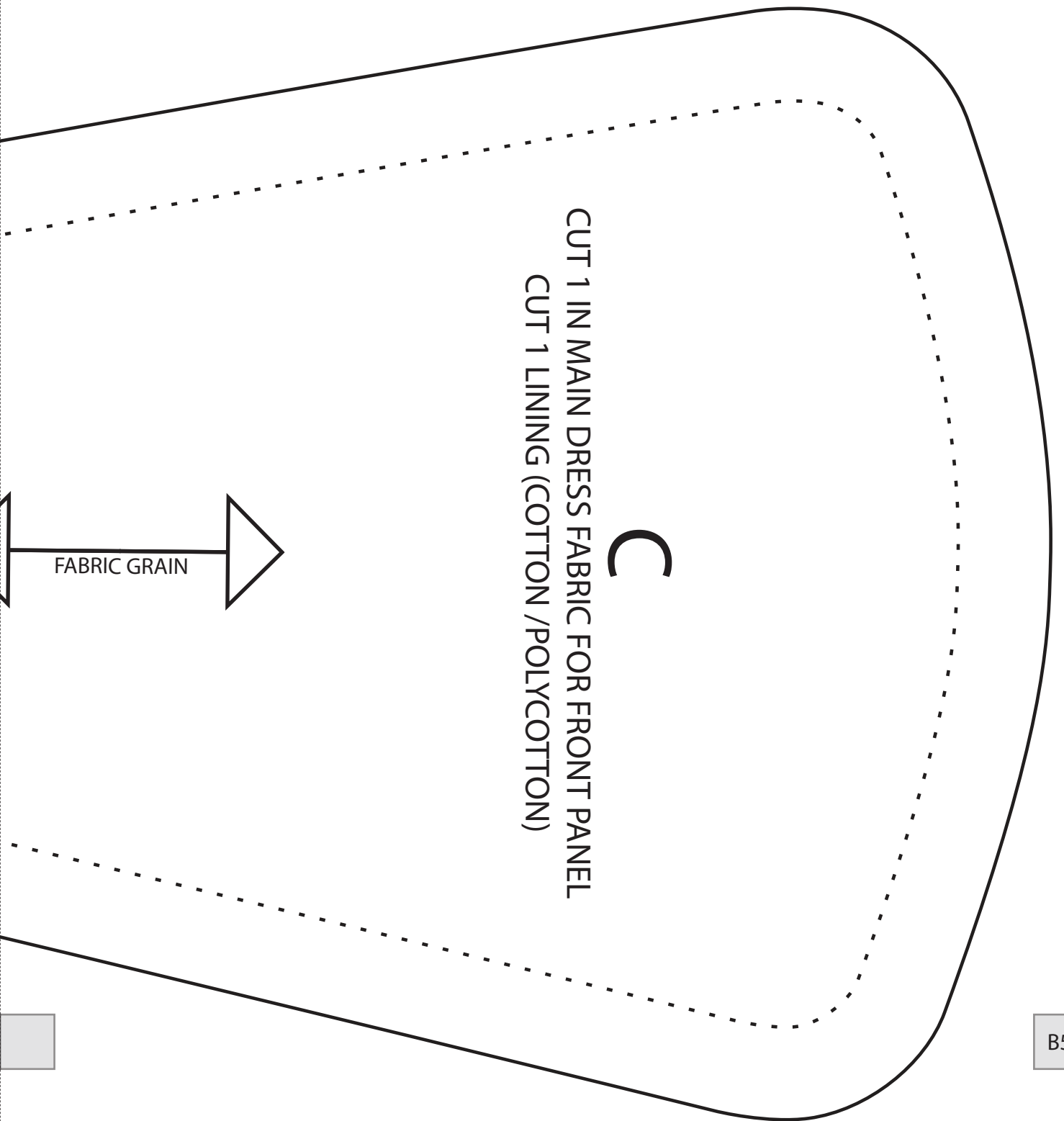
8

VENT FRONT
CUT 2 LEATHER
OR FAUX LEATHER

B3

RIGHT HARLOTS AND ANGELS
ALL RIGHTS RESERVED





Always know your exact measurements in order to make a good fitting corset! I am always shocked how many people start without having this basic but crucial information. Measure with a friend and compare. Patterns are for average height 5'6". Don't be afraid to alter! I have made this many hundreds of times but again know your own body shape. For corsets measure bust around fullest part wearing a good fitting bra. Always make a mock up for fitted tailored garments.

- 1 NECK.....
- 2. OVERBUST.....
- 3. BUST.....
- 4. UNDERBUST.....
- 5. WAIST.....
- 6. HIPS.....
- 7. NECK TO HEEL.....
- 8. NECK TO ABOVE KNEE.....
- 9. ABOVE KNEE TO ANKLE.....
- 10. ARM LENGTH.....
- 11. SHOULDER SEAM.....
- 12. ARM HOLE.....
- 13. BICEP.....
- 14. FORE ARM.....
- 15. WRIST.....
- 16. V NECK CUT.....
- 17. SHOULDER TO WAIST.....
- 18. WAIST TO ABOVE KNEE.....
- 19. THIGH (GARTER MEASUREMENT).....
- 20. BACK SHOULDER TO SHOULDER'S EDGE.....
- 21. NECK CHOKER MEASUREMENT.....

