



## Triple Deck Briefcase Instruction

*Craftsman Gus*

### Material requirement:

Requirements:

- 2 Rectangle ring (size: 2 cm.)
- 1 Lock set
- 2 Buckles (size: 2 cm.)
- No#5 zipper (34.5 cm long)
- No#5 zipper head and zipper pull
- 1.8 mm. thickness Veg. Tanned leather or other stiff leather recommended.

See the YouTube link below for the making of this bag:

<http://bit.ly/2qWRcPb>

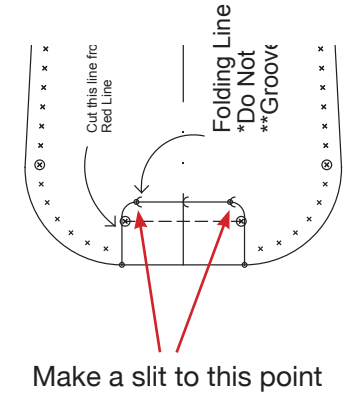
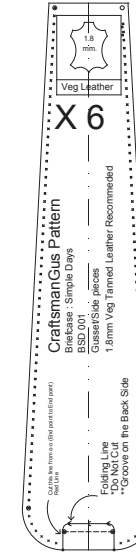
\*\*\*NOTE: this is an instruction file only. Please refer to the file name "Pattern\_.....pdf" to print the pattern pieces



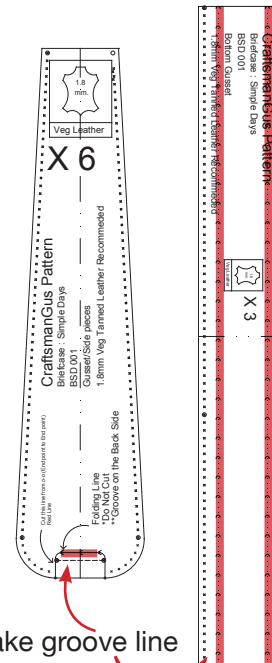
## Triple Deck Briefcase Instruction

CraftsmanGus

1.



2.



Make groove line

\*\*\* For separate punching method: use guide on the pattern to mark on the gusset and main body pieces to ensure that you have equal amount of holes.

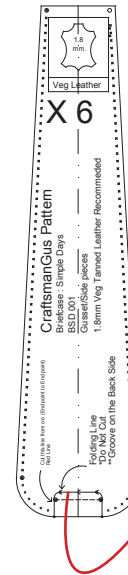
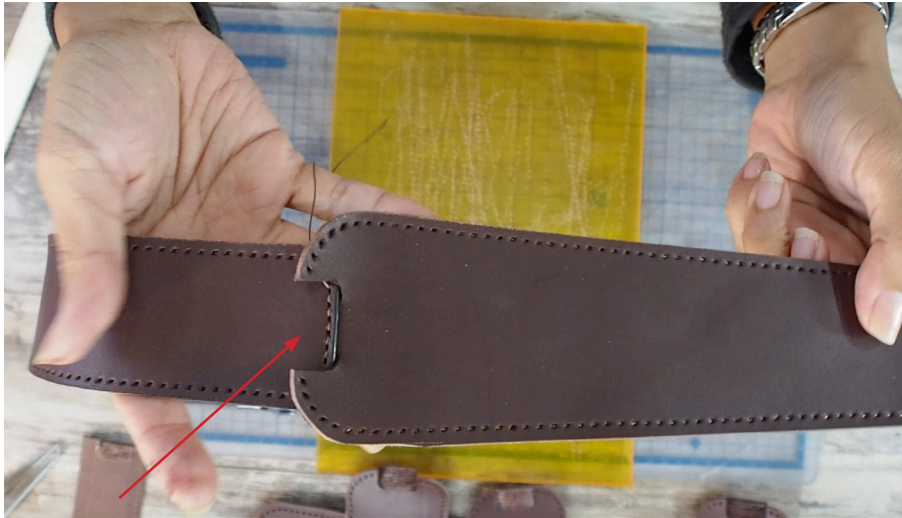
\*\*\* 4 mm. diamond pricking irons is recommended



## Triple Deck Briefcase Instruction

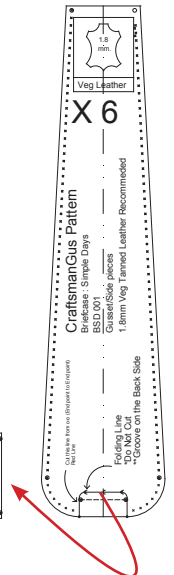
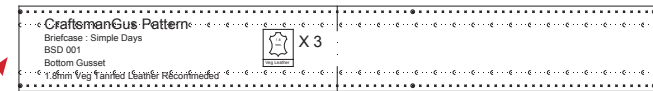
CraftsmanGus

3.

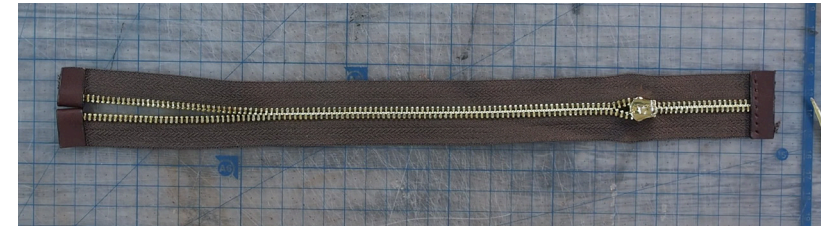


- Stitch the side gussets to the bottom gusset

\*\*Totaling 3 sets of stitched gussets



4.



- Stitch zip stopper to the zipper with one end closed while leaving the other end open

Zip Stopper X 3

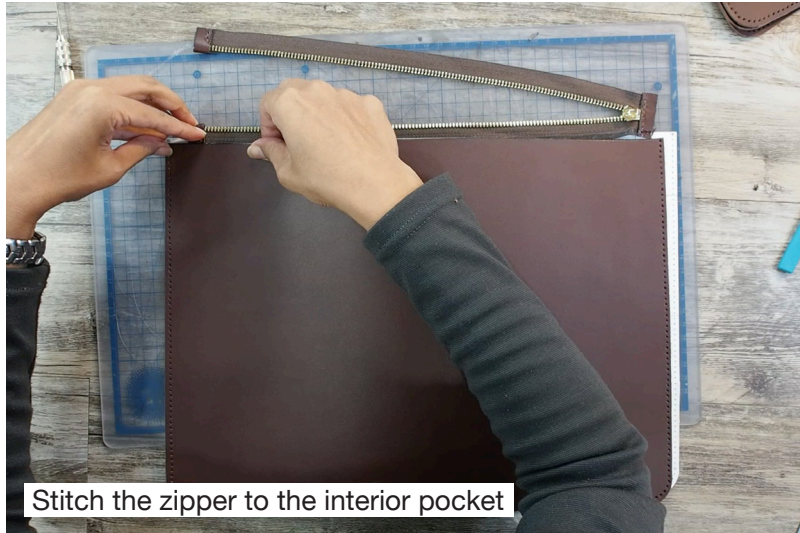




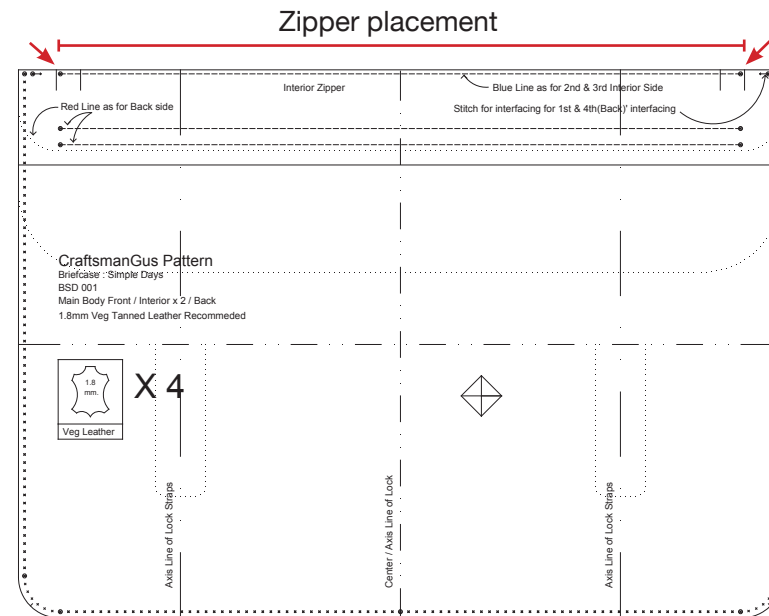
## Triple Deck Briefcase Instruction

CraftsmanGus

5.



Stitch the zipper to the interior pocket



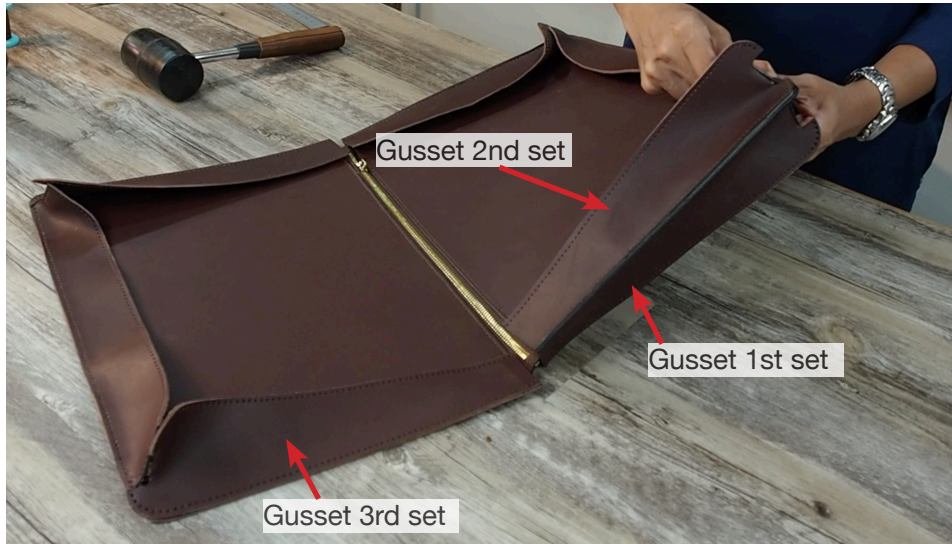




## Triple Deck Briefcase Instruction

*Craftsman Gus*

6.



Stitch gusset to the zipper pocket panel

- glue 1st set of gusset to the front pocket panel
- glue 2nd set of gusset to the back pocket panel and stitch together
- glue 3rd set of gusset to the front panel on the other side



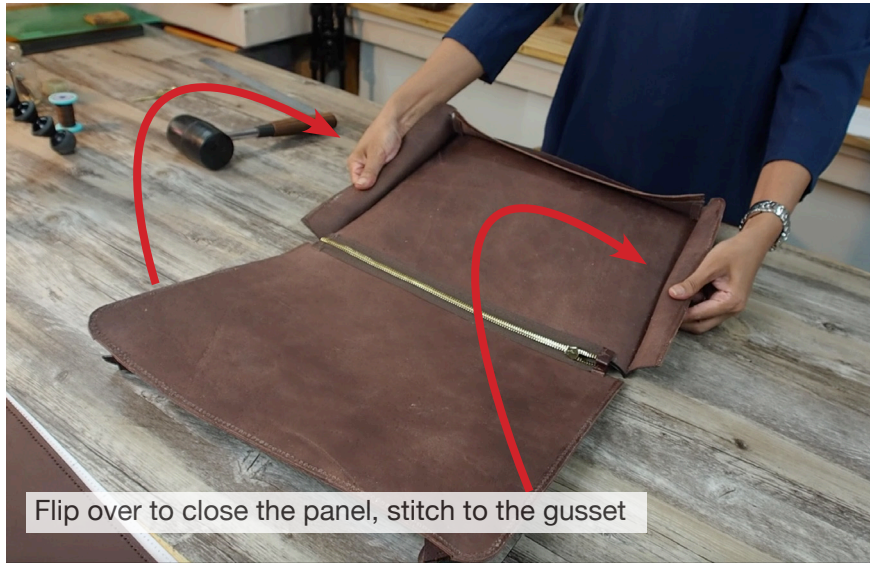


## Triple Deck Briefcase

### Instruction

*Craftsman Gus*

7.



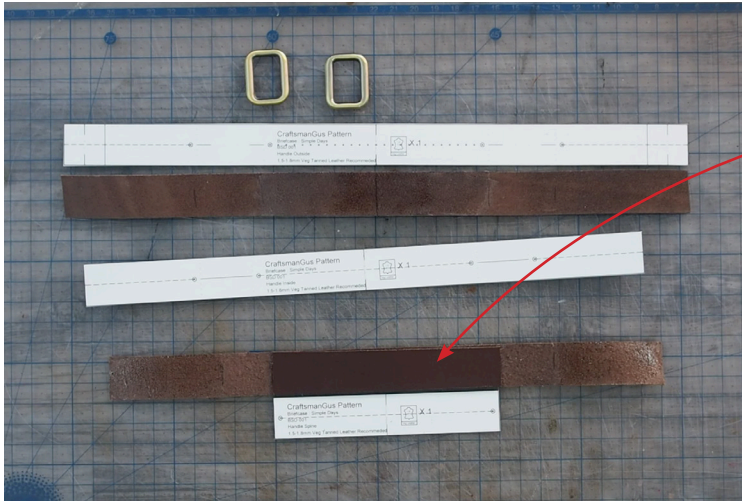




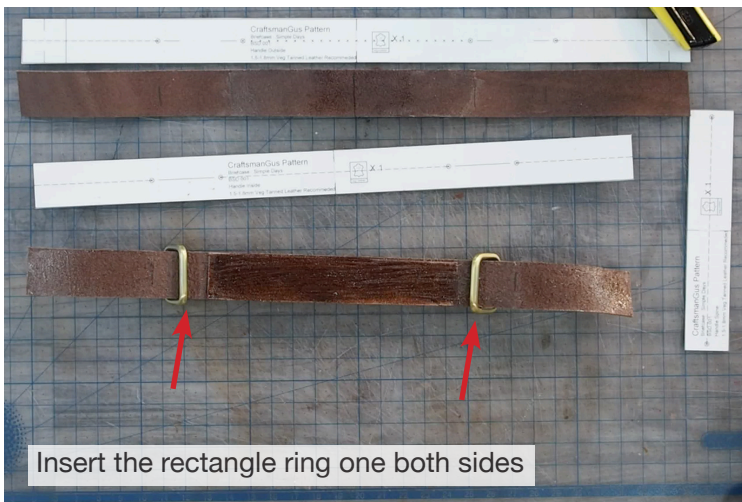
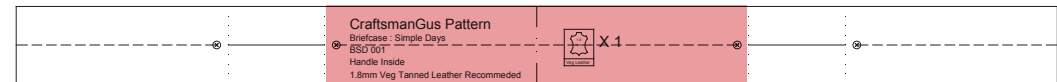
## Triple Deck Briefcase Instruction

CraftsmanGus

8.



↓ Glue the “Handle Spine” to the “Handle Inside”



Insert the rectangle ring one both sides



Fold in to lock the ring and stitch

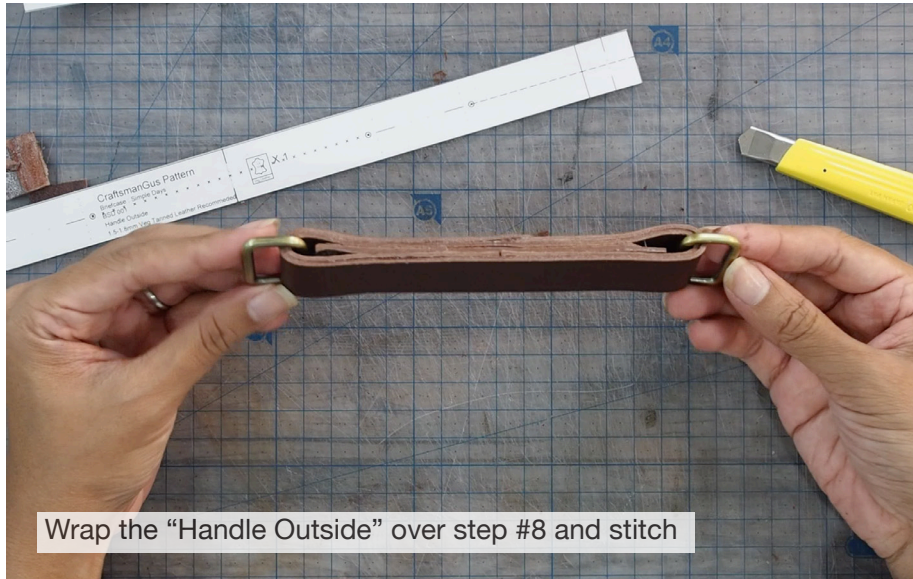




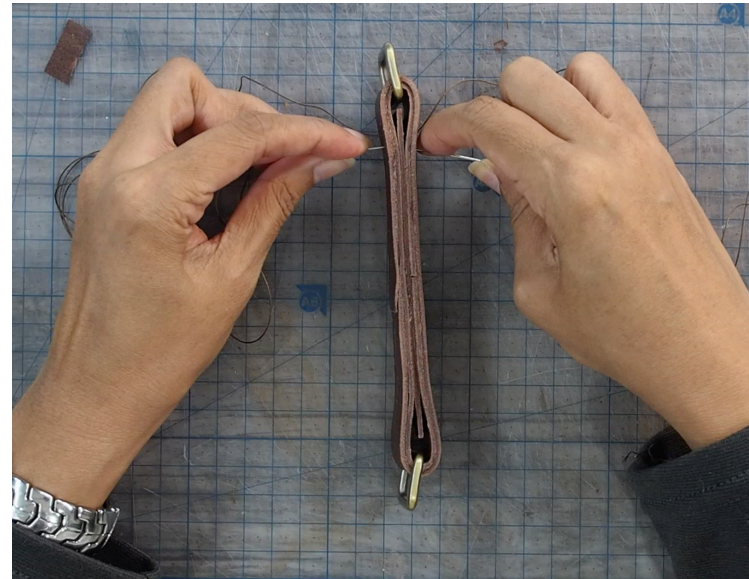
## Triple Deck Briefcase Instruction

*CraftsmanGus*

9.



Wrap the "Handle Outside" over step #8 and stitch



10.



Stitch the handle grip over step# 9







# Triple Deck Briefcase Instruction

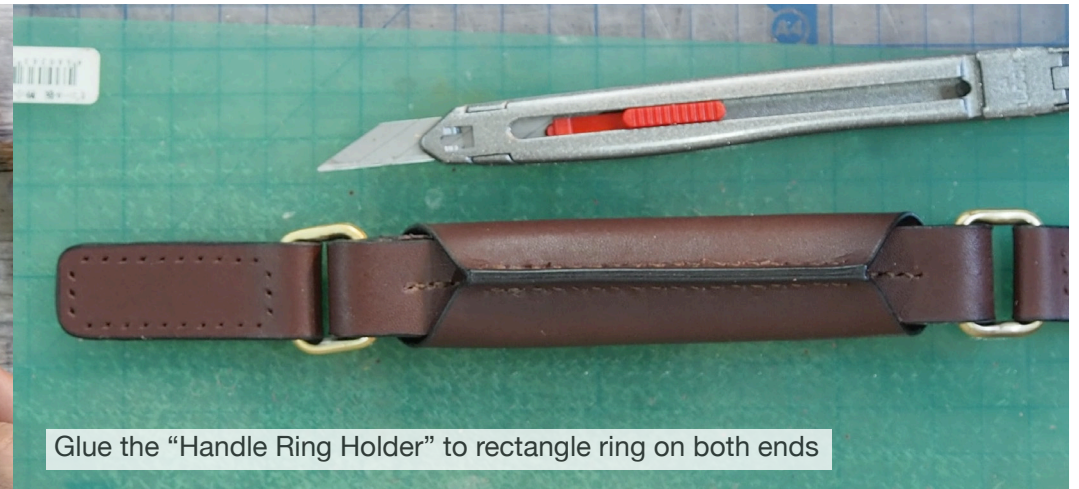
Craftsman Gus

11.

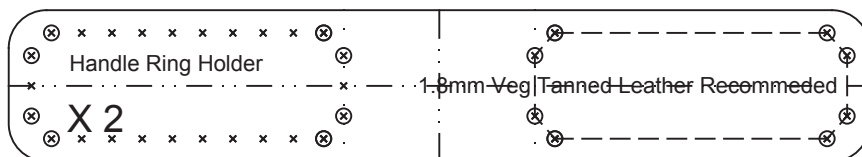


Cut off the excess of the handle grip after stitched

12.



Glue the "Handle Ring Holder" to rectangle ring on both ends





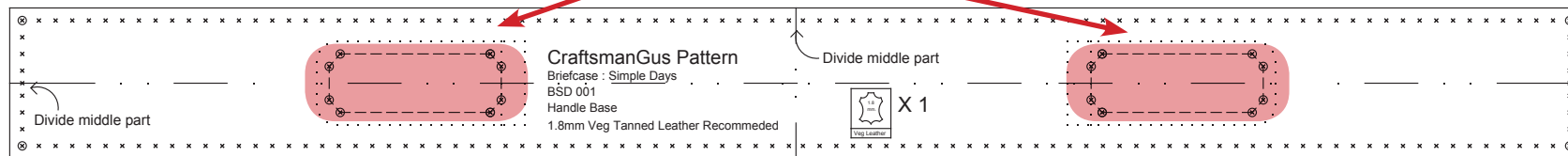
## Triple Deck Briefcase Instruction

CraftsmanGus

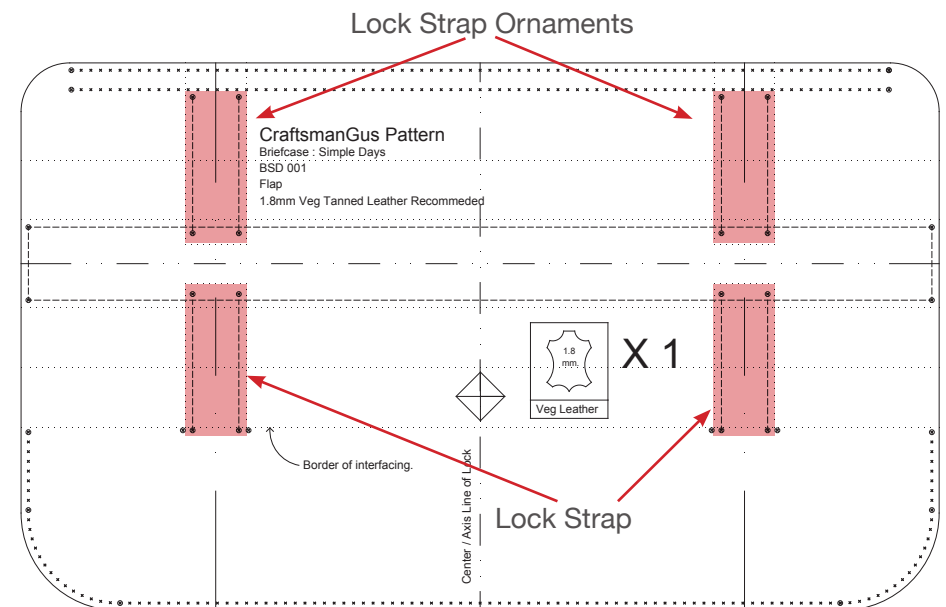
13.



Stitch "Handle Ring Holder" to "Handle Base"



14.







## Triple Deck Briefcase

### Instruction

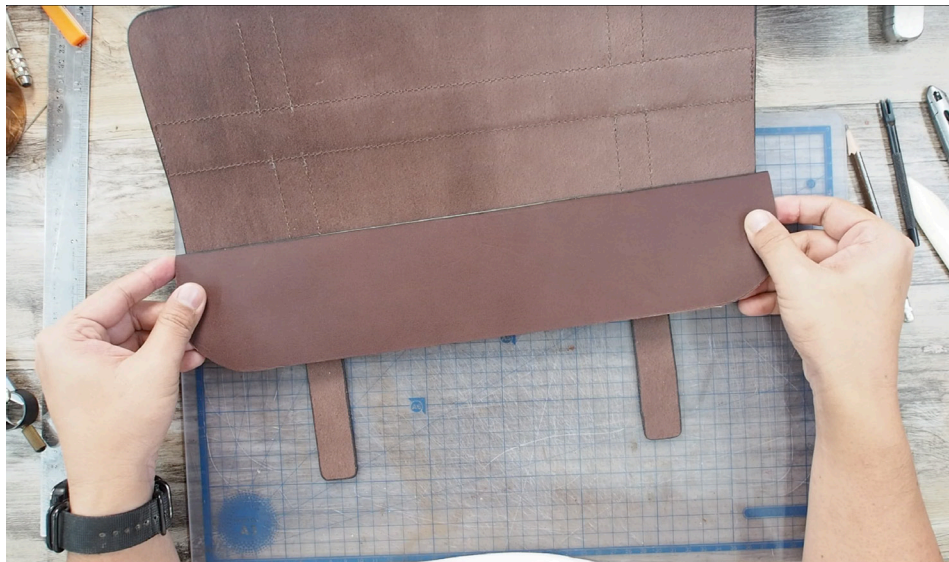
*Craftsman Gus*

15.



Stitch the handle base to the flap.  
- use metal bar as a stiffener between handle base and flap

16.



Stitch the flap interfacing



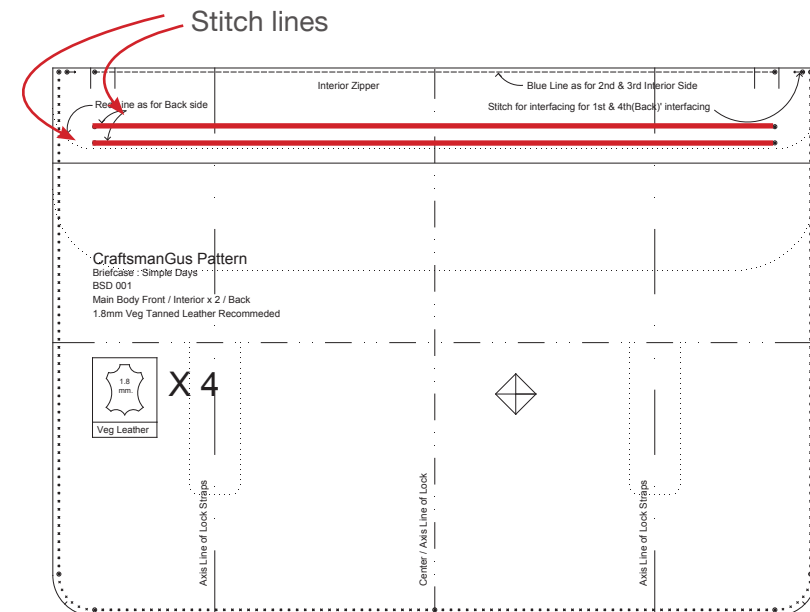
## Triple Deck Briefcase Instruction

CraftsmanGus

17.



18.







## Triple Deck Briefcase

### Instruction

*Craftsman Gus*

19.



\*\* Please note the position of the lock accessory is not included in this pattern because the position varies depending on the size and type of accessory you use

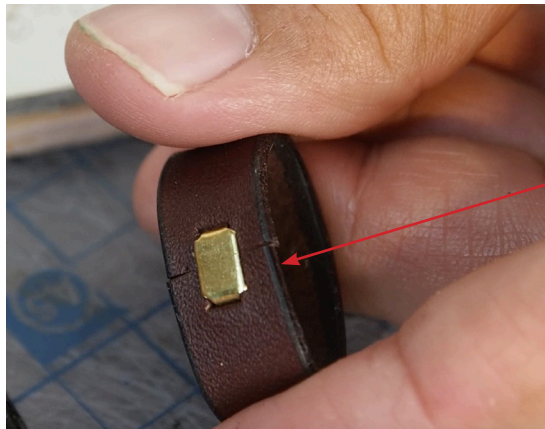
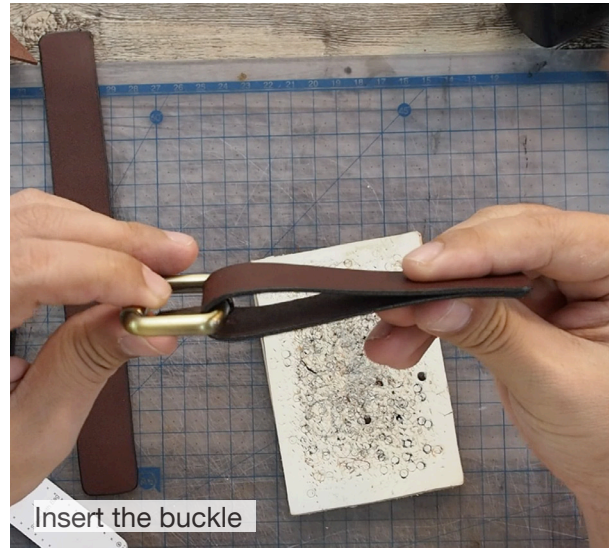
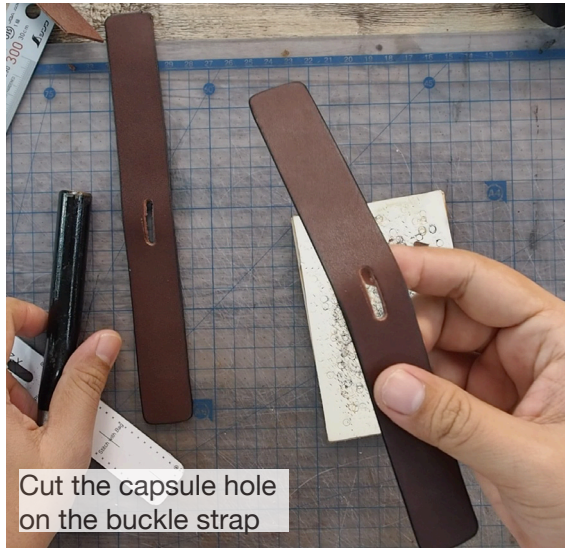




# Triple Deck Briefcase Instruction

Craftsman Gus

20.

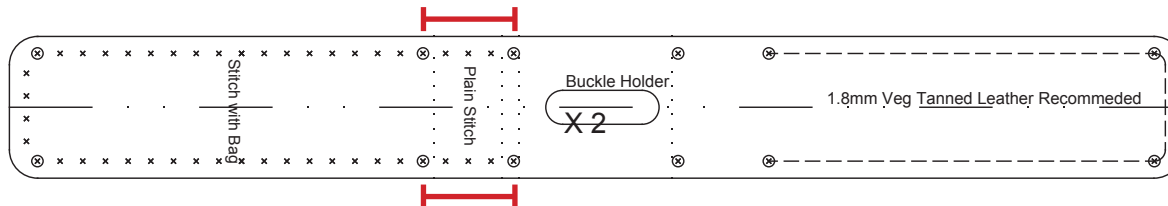


Lock Strap X 2

Use the zip stopper to close the lock strap



Stitch this part first before attaching to the front panel







## Triple Deck Briefcase

### Instruction

*Craftsman Gus*

21.



22.

