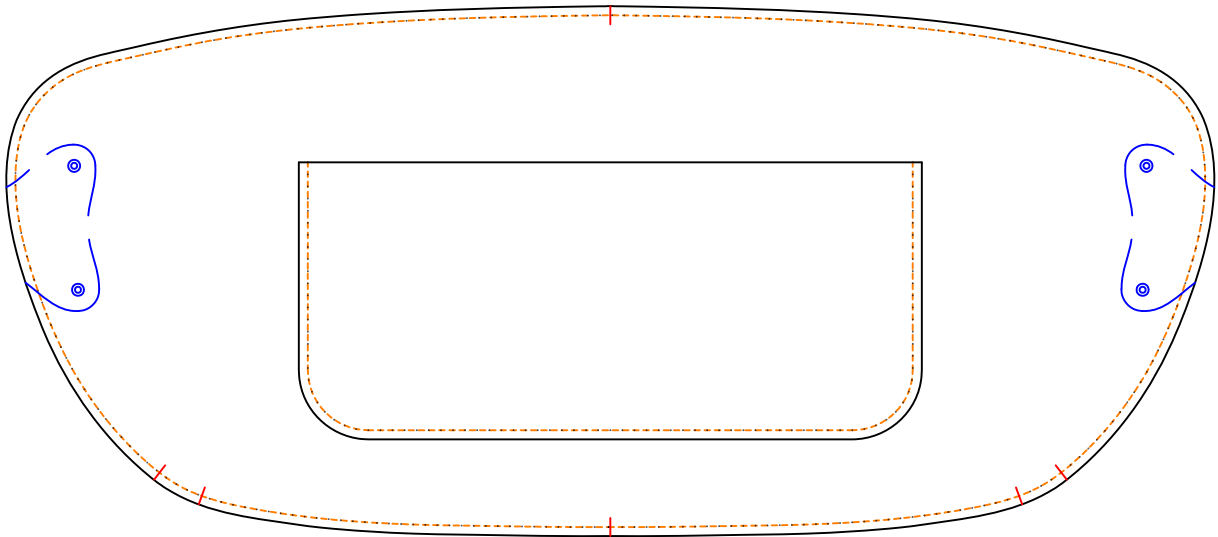
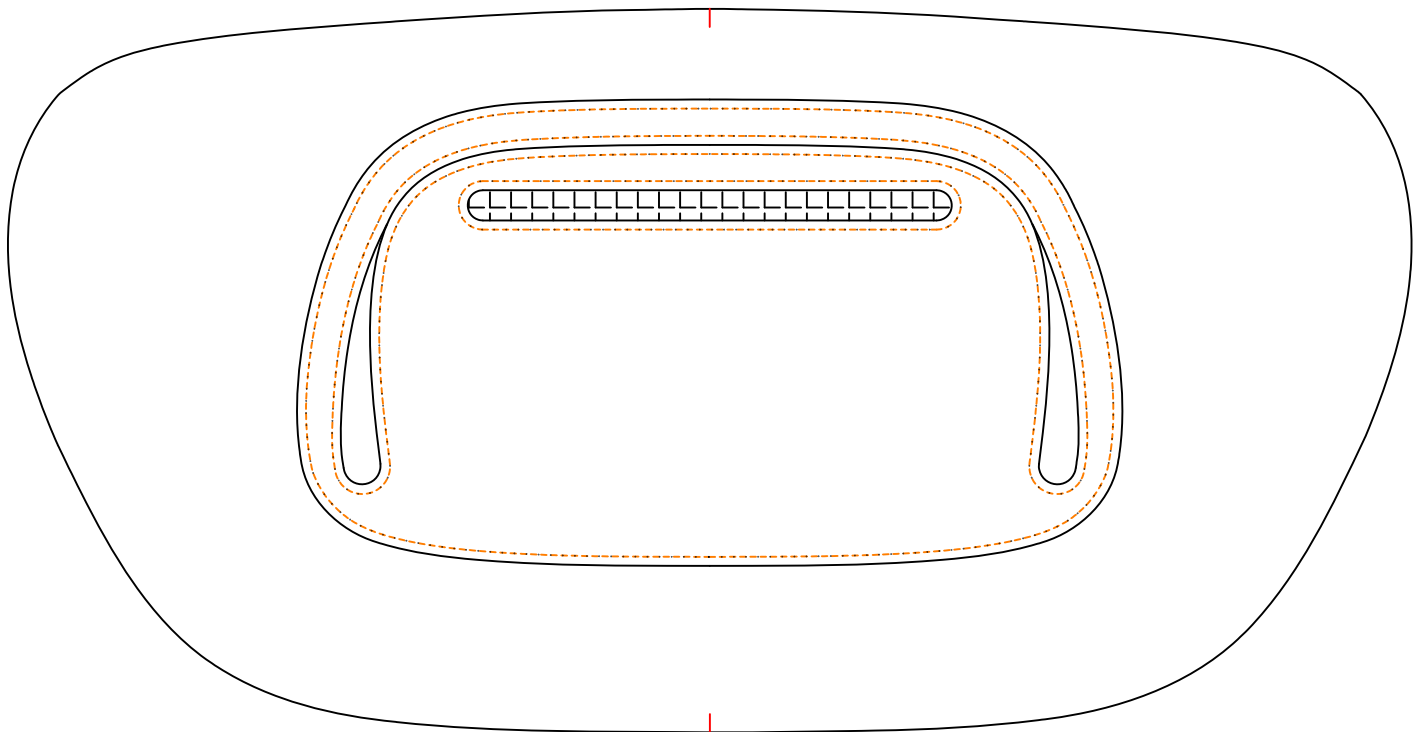


ACC-81 Instruction

Step 1: Stitch A04 on A01 to form the back external pouch.

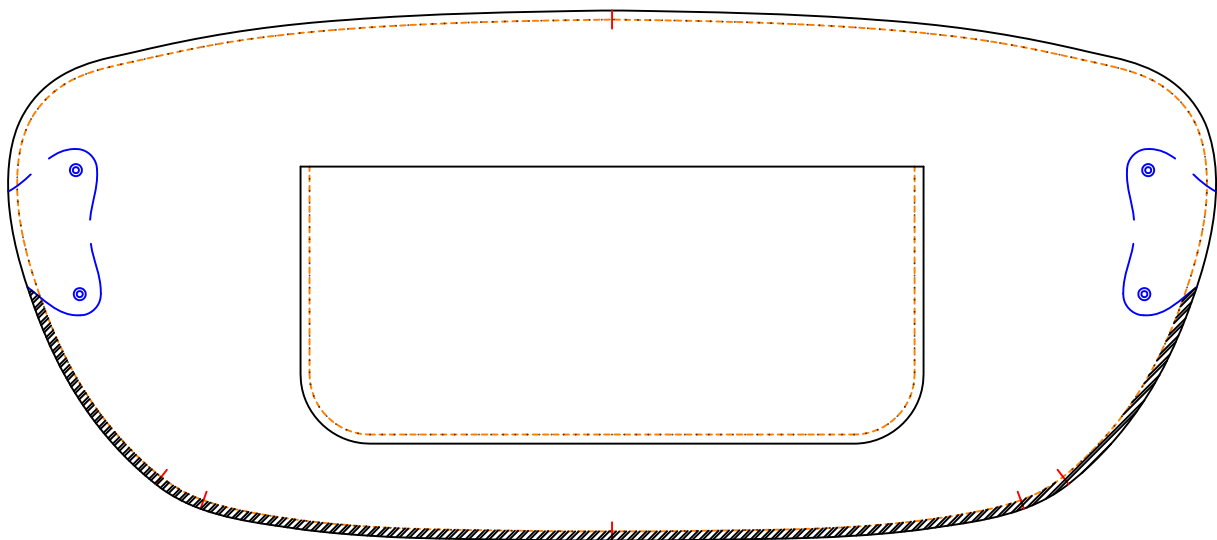


Step 2: Install 180mm zipper on A02, and after that glue A03 on A02 according to the orienting line, also glue and stitch 430mm zipper on. After doing that, you will see a inner pocket is formed between A03 and A02.

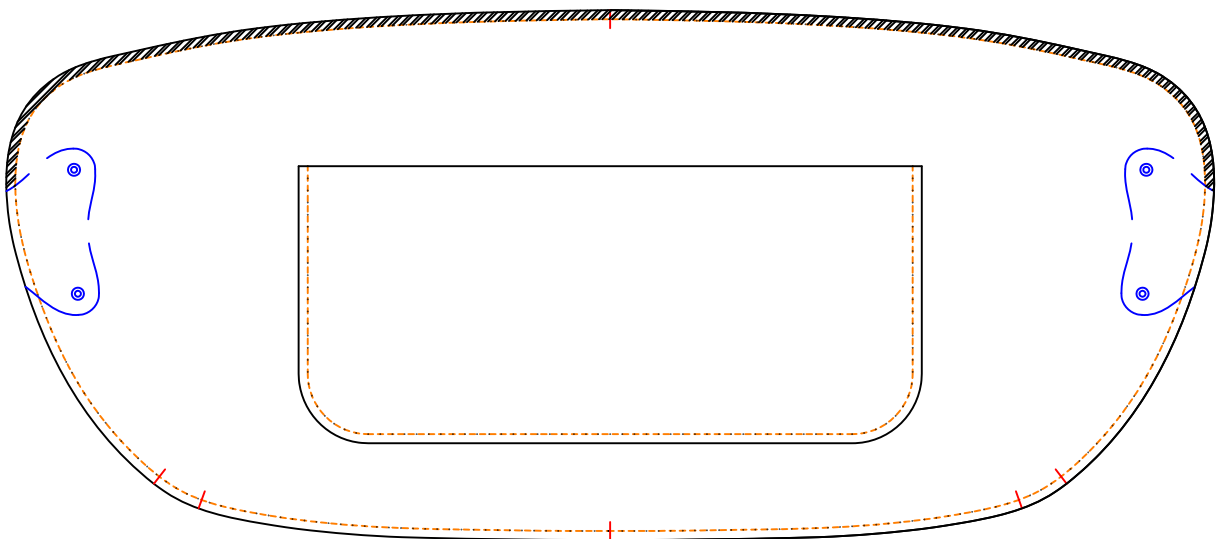


Step 3: The key step is coming. Please paint glue on the edge area that between anchor points, pleat orienting line, and A05's 2 tips. Just glue the downside as sketch shows.

Then align A02's down anchor points with A01's down anchor points, paste A02 from middle anchor point to 2 sides, when meet pleat orienting line, stop, fold back, the fold back distance equals the distance that between 2 pleat orienting line, and go on pasting until all glue was used.



Step 4: Now we paint glue on the shadow area as sketch shows, glue A02 on A01 until all glue was used.



Step 5: Then we only have 2 areas that haven't been glued, please adjust 2 pleats on each side by hand, here we won't say too much, just try, it is easy, after that, you can sew around and install 4 rivets with 2 A05. The bag is OK.

Notice:

1, You can burnish edges for aesthetic if you use vegetable tanned leather and use edge paint for aesthetic if you use chrome tanned leather;

2, 1oz=0.4mm;

3, Here is the line instruction.

