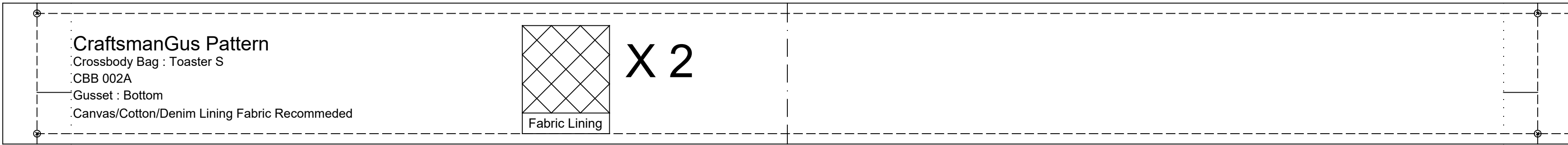
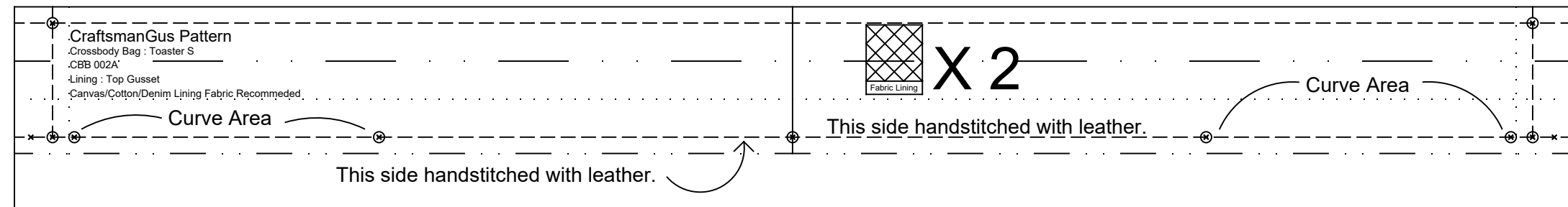
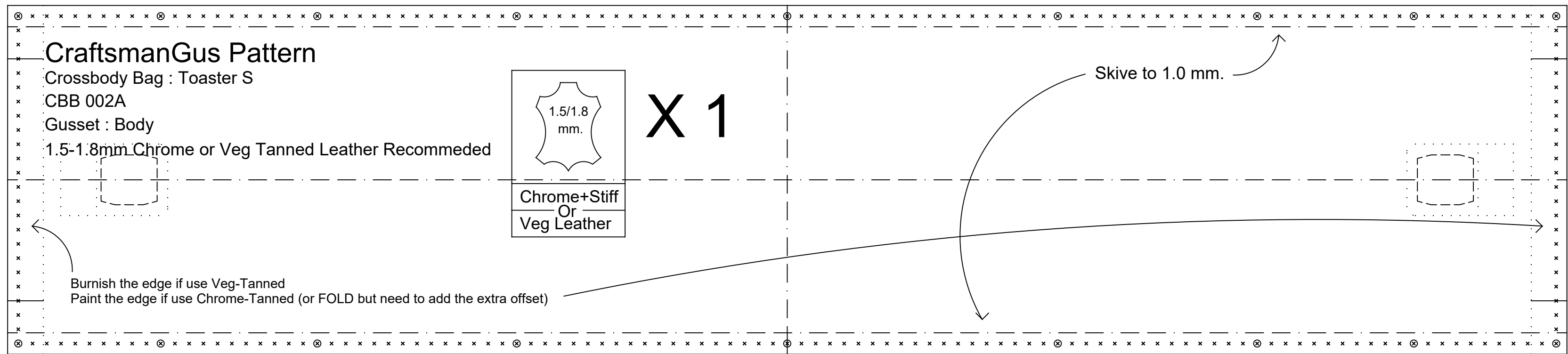
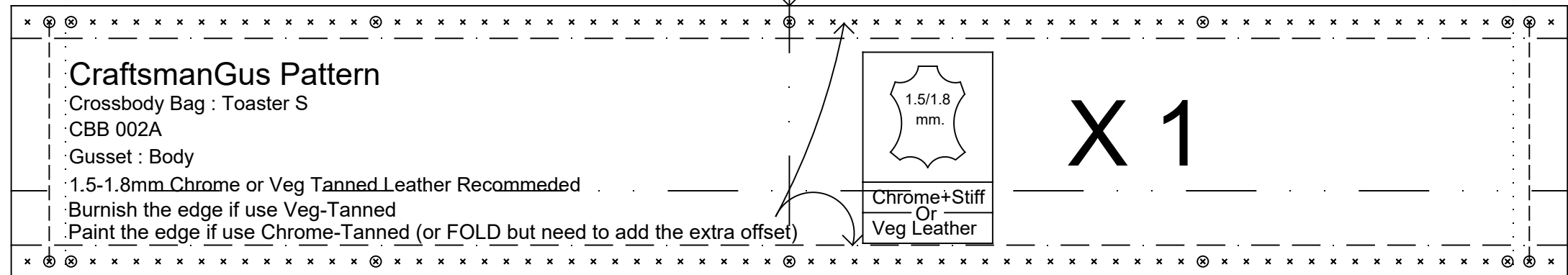
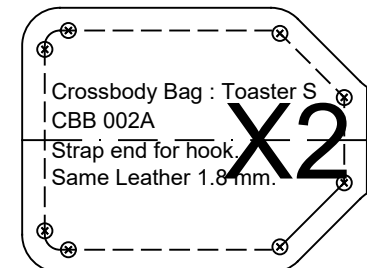
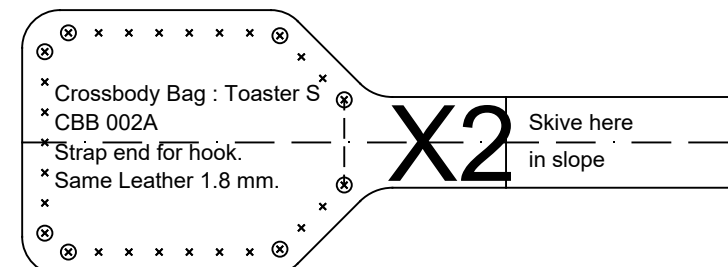
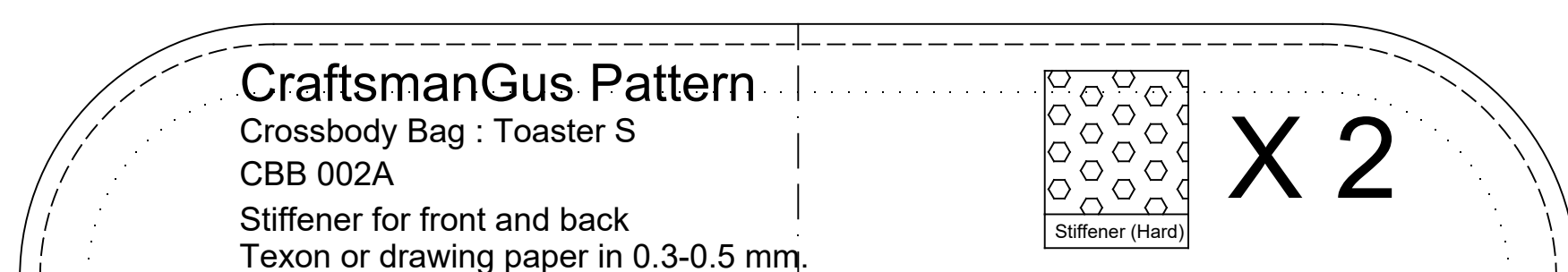
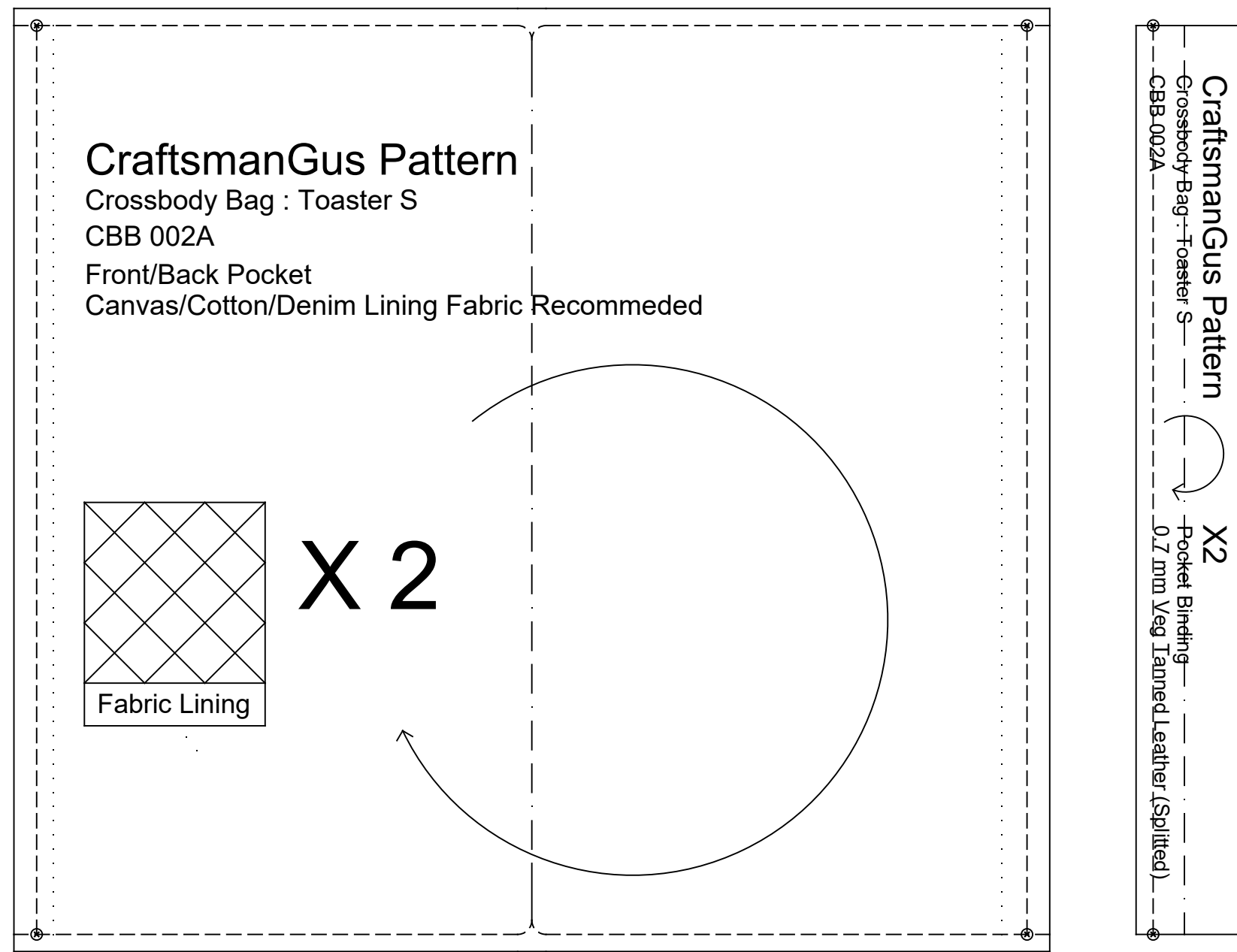
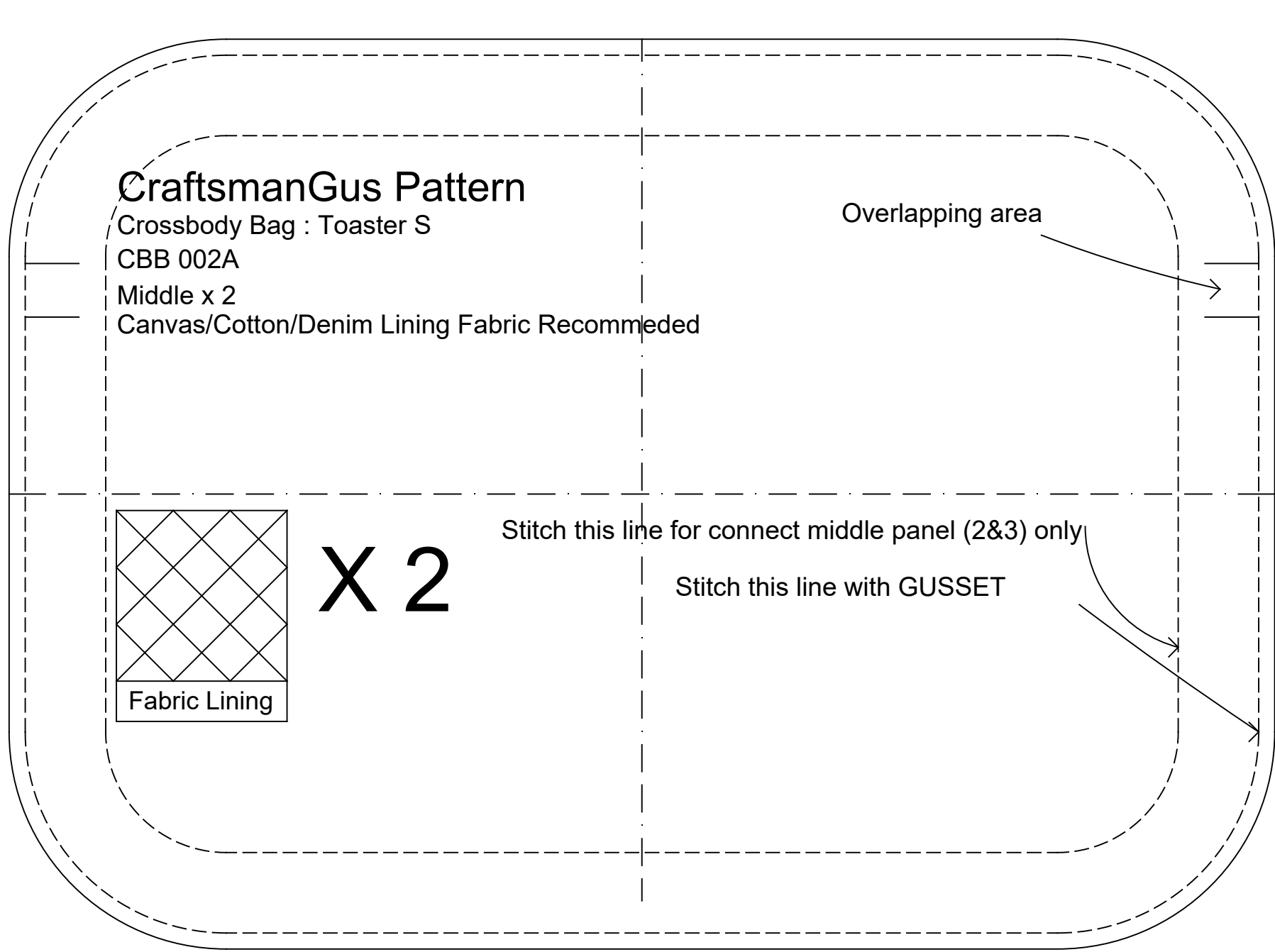
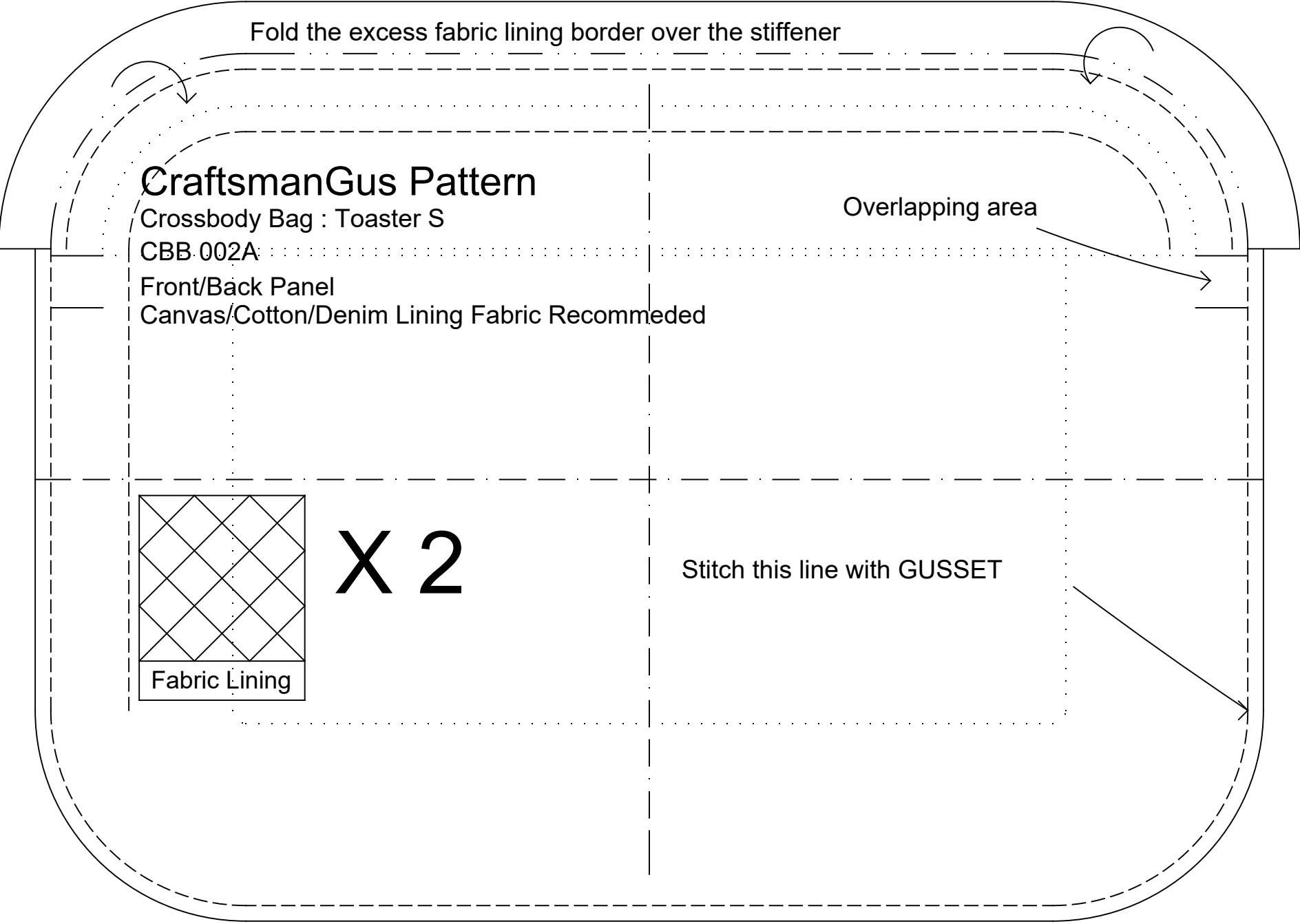
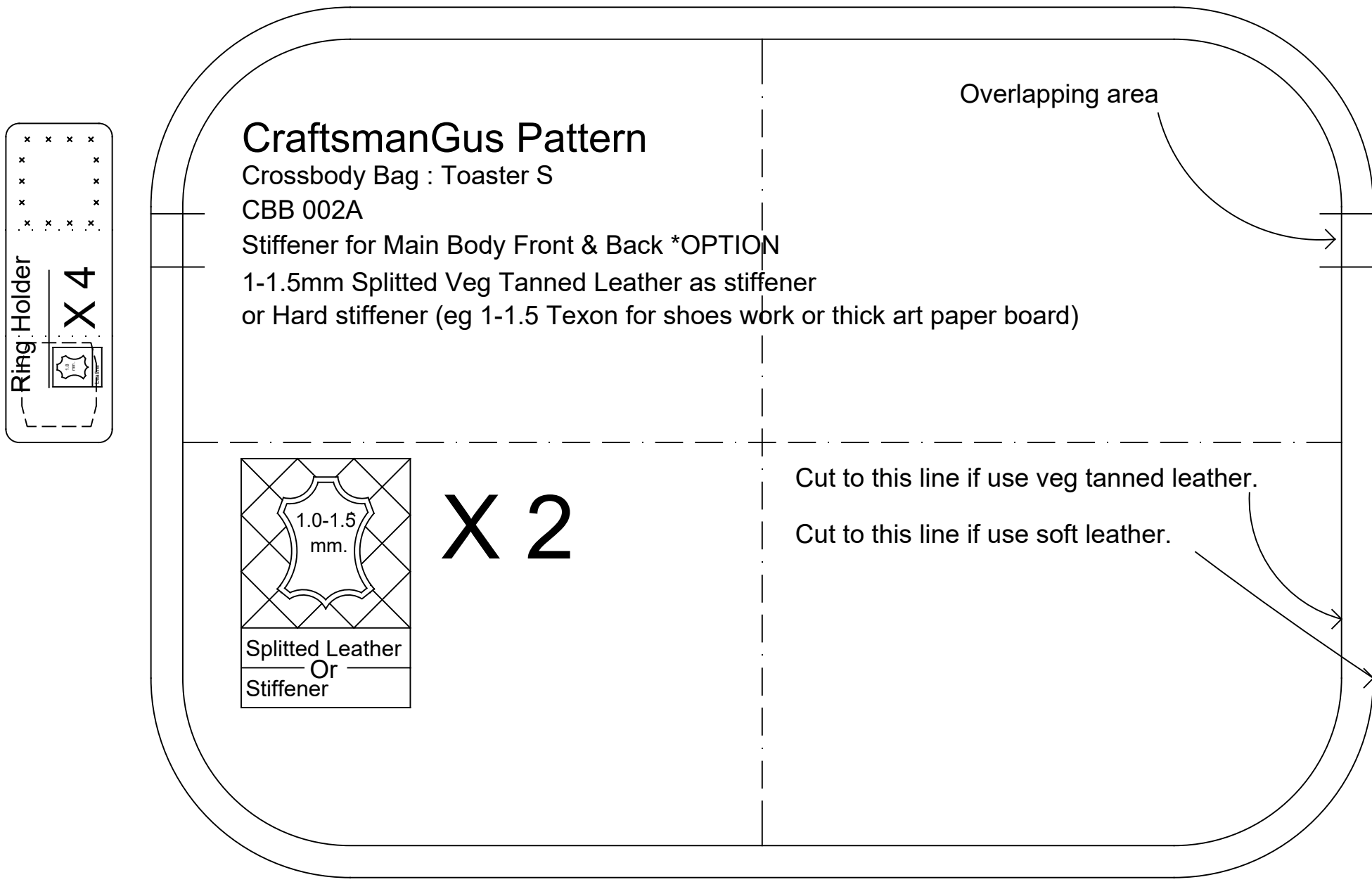
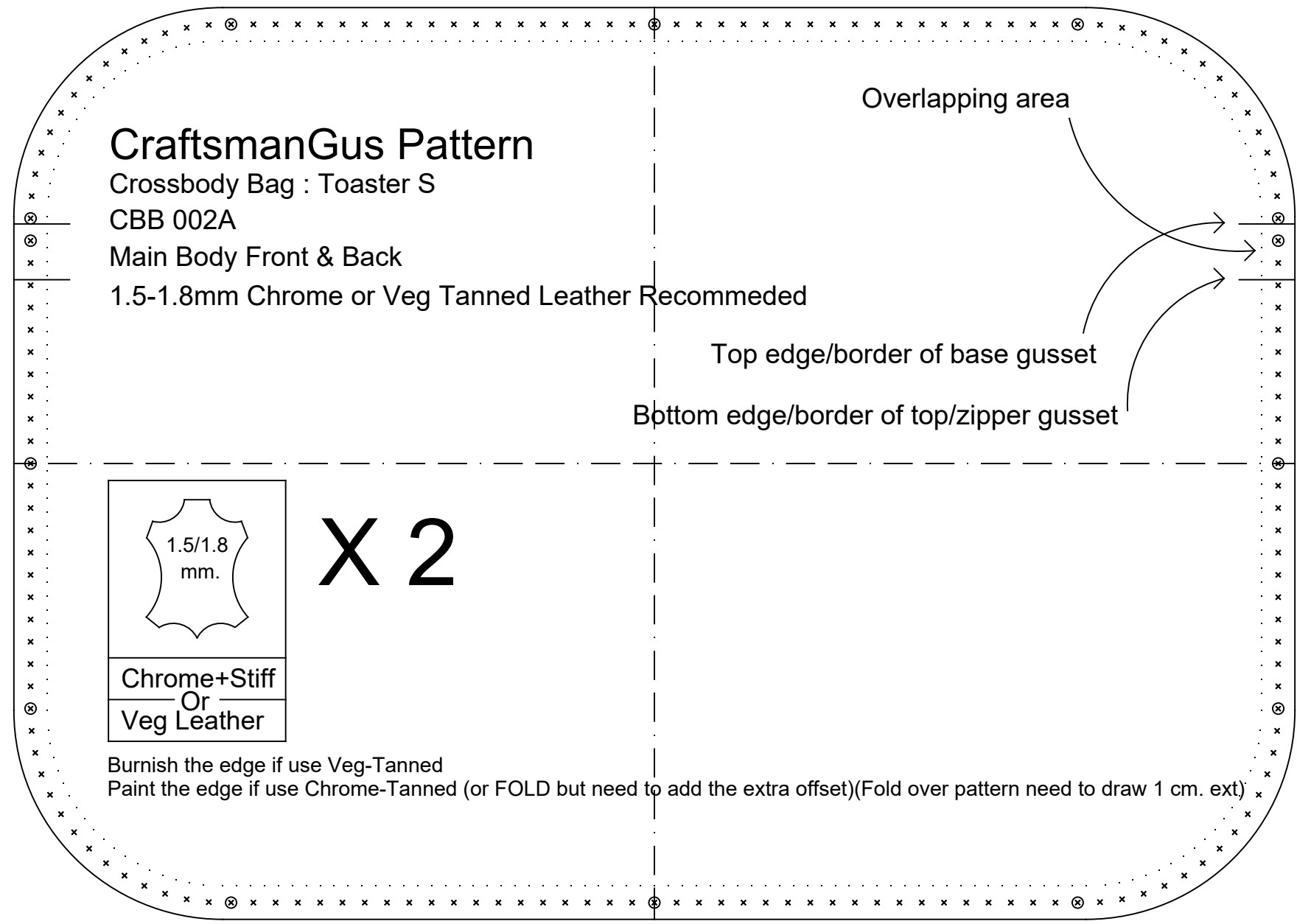


Crossbody Bag : Toaster S



Legends

Name of the Pattern > CraftsmanGus Pattern

Working Code Name > BSD 001

Name of Parts > Typical Card Slot 2nd & 3rd Slot Bottom

Name of Materials > Thin Polyester Lining Fabric Recommended

Notes > *For small card lining will be less wide (2mm. less for L&R side)

Line Type

Solid line : For boundaries/borders of the material

Dash line : If out of borders mean to an excess. Need to be cut after stitch.

Dash line with x in o : Stitching line without need to be precise hole punching.

Solid line without x in o : Cutting line as slit.

Dash + 1Dot line : Center Line

Dash + 2Dot line : Border line after folded.

Italic hatch within dash border : Excess, need to be cut after stitch.

Dotted line : Indicates where are other borders underneath.

Continuous-C line : Groove line on the back of the leather/ for folding.

Hole/Button Position Signage

Overlap/Joining paper piece

0.3 mm

Leather

0.3 mm

Lining

0.3 mm

Cushion

0.3 mm

Splitted Leather Stiffener

0.3 mm

GUIDE CARD

0.3 mm

Stiffener (hard)

Table of Materials :
Graphic sign to help for working more clearer.
Description written in each templates.

X 2
(Number of pieces required)