

# *Opening the MyBook World Edition and removing the drive...*

Prepared by **ionoff**  
for the [mybookworld.wikidot.com](http://mybookworld.wikidot.com) community



# *Opening the MyBook World Edition*

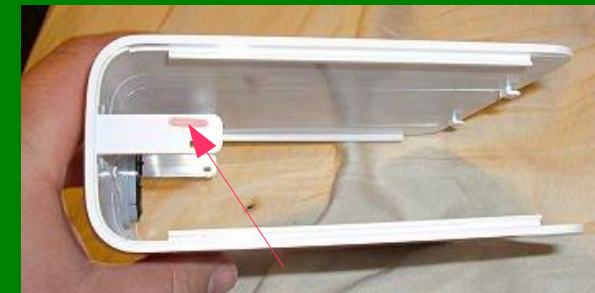
- Step Overview
    - Find the two tabs on each side of the device
    - Press down on each individually and pry the device open a little bit on each side until both are and not blocked by the tabs
    - Continue to open the device
    - Remove the single screw from the front led/button
    - Remove the 4 screws on the top side of the device to release the drive. (the screws connected to the plastic and not the drive itself) (DONT REMOVE SCREWS FROM ACTUAL DRIVE)
    - Remove the 4 screws from the bottom of the drive.
    - Remove the drive.
- 
-

# Opening the MyBook World Edition

- Find the two tabs on each side of the device
  - One is to the far left
  - The other is offset from the center

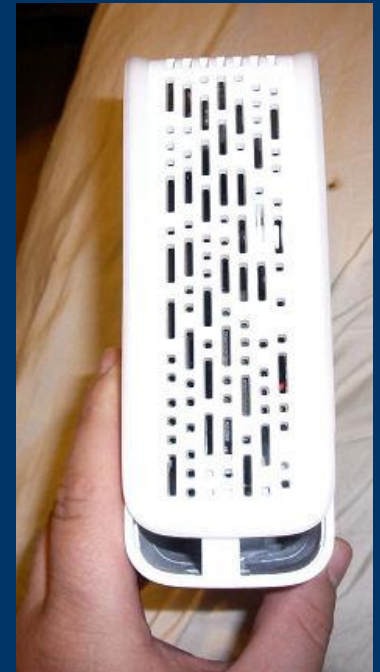


Your not expected to be here yet, these are just to show where the tabs are.



# Opening the MyBook World Edition

- Press down on each individually and pry the device open a little bit on each side until both are and not blocked by the tabs
- Continue to open the device



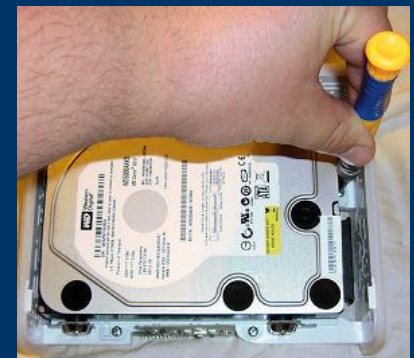
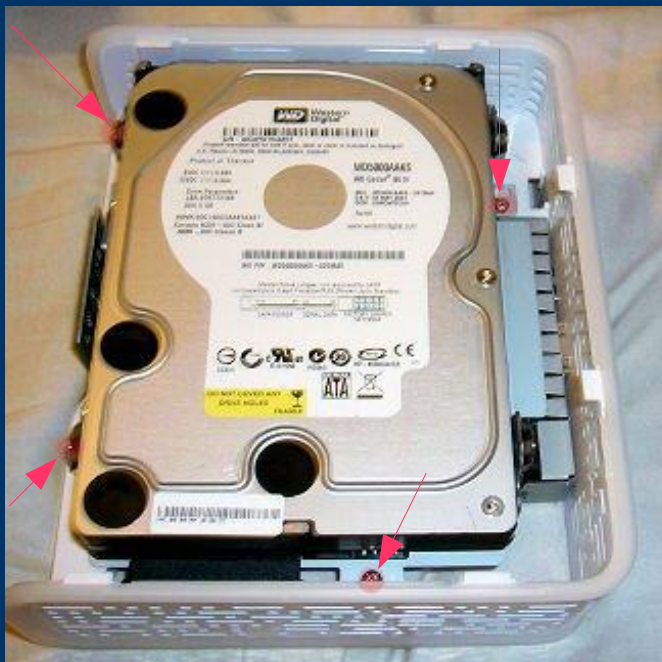
# *Removing the drive*

- Remove the single screw from the front led/button



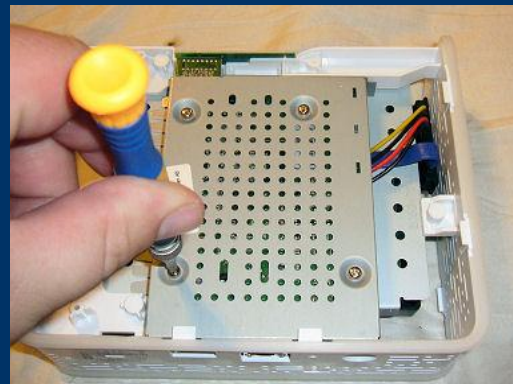
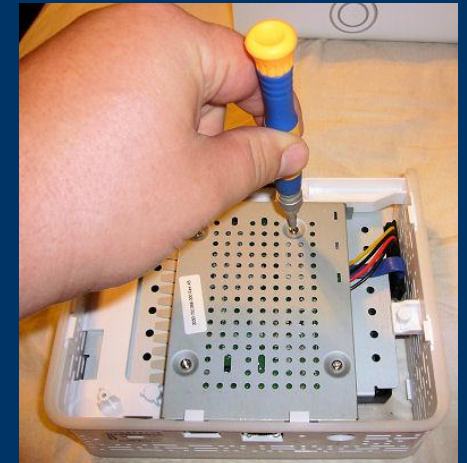
# Removing the drive

- Remove the 4 screws on the top side of the device to release the drive.
  - The screws connected to the plastic and not the drive itself.
  - DONT REMOVE SCREWS FROM ACTUAL DRIVE



# Removing the drive

- Remove the 4 screws from the bottom of the drive.

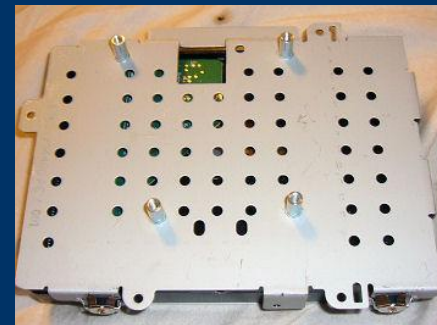


# Removing the drive

- Remove the drive and your done



Top of drive



Bottom of drive, still in shock mount

