

深圳市立显科技有限公司

产 品 承 认 书

SPECIFICATION FOR APPROVAL

CUSTOMER	
MODEL NO.	
WEITAI	
MODEL NO.	HXM0686TFT-001 TYPE
LCD MODULE	6.86" IPS 480*(RGB)1280

WEITAI			CUSTOMER
PREPARED	CHECKED	APPROVED	APPROVED
彭辉	林素真	吴尚俭	

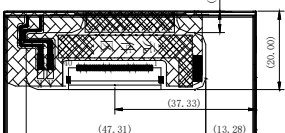
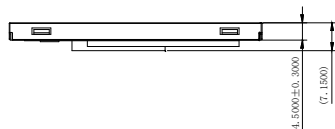
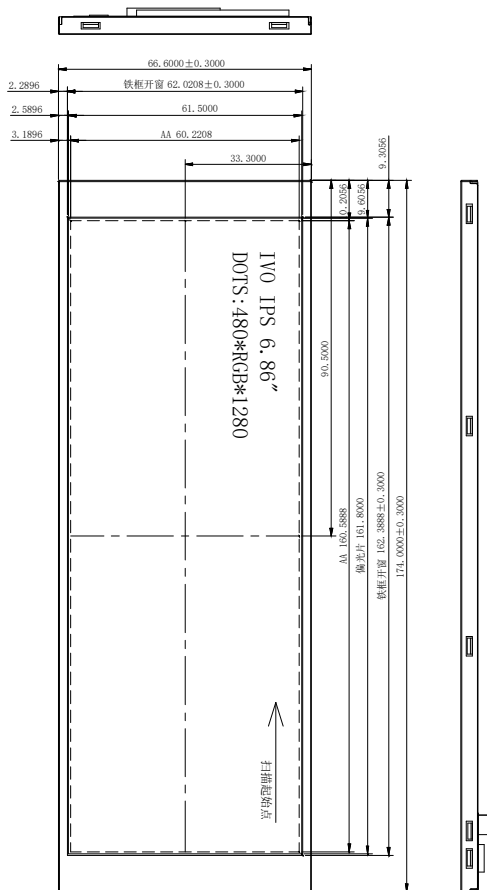
二、目录

[illegible]



三、变更记录

[illegible]

四、模组成品图纸

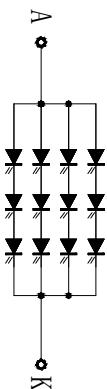


DATA	DESCRIPTION
1	GND
2	DIP
3	DON
4	GND
5	DIP
6	DIN
7	GND
8	CLAP
9	CLAN
10	GND
11	DIP
12	DON
13	GND
14	DIP
15	DON
16	GND
17	GND
18	10VCC Δ
19	10VCC Δ
20	NC
21	NC
22	SCL-NC
23	NC
24	RSTB
25	STDB
26	NC
27	GND
28	K
29	K
30	GND
31	NC
32	GND
33	GND
34	NC
35	A
36	A
37	GND
38	VDD-3V3
39	VDD-3V3
40	NC


1. Rots must be compiled.
2. ~~A~~Modification rev. number
3. Draft angle 1.0°  
4. " * " ICON MEAN IMPORTANT DIM.
5. All radii without dimension 0.3
5. All radii without dimension 0.3, Unspecified Tolerances is: ±0.3
6. Driver IC: FL7705N

Electrical-Optical Characteristics($T=25^{\circ}\text{C}$):					
Item	Symbol	min.	typ.	max.	Unit
Luminance	L_v	—	—	—	cd/m^2
Uniformity	Avg	80	85		%
Colour	X	0.26	0.30		
Coordinate	Y	0.26	0.33	0.38	

Viewing Angle (CR10)	If		mA	模组亮度值
	$\oplus_{x^{+}}$	$\ominus_{x^{+}}$		
Horizontal	$\oplus_{x^{+}}$	80	85	—
	$\ominus_{x^{+}}$	80	85	—
Vertical	$\oplus_{x^{+}}$	80	85	—
	$\ominus_{x^{+}}$	80	85	—



7. Circuit Diagram: $3 \times 4 = 12$

MODEL NO. :	REV: V00		
CUSTOMER'S NO. :	REV: 0		
IYO 6.86" IPS			
SHEET 1 of 1	SCALE 1 : 1	THE THIRD ANGLE PROJECTION 	UNIT: mm
DESIGN :			
CHECKED :			
COUNTERSIGN :			
APPROVED :			

五、PIN 定义

Pin No.	Symbol	Functional	Notes
1	GND	Ground	
2	NOP	MIPI data input	
3	D0N	MIPI data input	
4	GND	Ground	
5	D1P	MIPI data input	
6	D1N	MIPI data input	
7	GND	Ground	
8	CLKP	MIPI data input	
9	CLKN	MIPI data input	
10	GND	Ground	
11	D2P	MIPI data input	
12	D2N	MIPI data input	
13	GND	Ground	
14	D3P	MIPI data input	
15	D3N	MIPI data input	
16	GND	Ground	
17	GND	Ground	
18, 19	IOVCC	Power supply(1.8V)	
20-23	NC	No connection	
24	RSTB	Global reset pin	
25	STBYB	Standby mode, Normally pulled high	
26	NC	No connection	
27	GND	Ground	
28-29	BL-K	Back light-K	
30	GND	Ground	
31	NC	No connection	
32-33	GND	Ground	
34	NC	No connection	
35-36	BL-A	Back light-A	
37	GND	Ground	
38-39	VDD	Power supply for digital circuits +3.3V input	
40	NC	No connection	

六、Porch 设定/上电时序

480RGBx1280(4 Data Lanes)						
Parameter		Symbol	Min.	Typ.	Max.	Unit
MIPI data frequency		FDATA	300	320	350	Mbps
Clock frequency		FRAME		60		HZ
Hertical Section	Active	THD	480			us
	Period	TH	482.5	512	—	us
	HBP	THBP	1	12	—	us
	HFP	THFP	1	16	—	us
	HSYNC	THPW	0.2	4	—	us
Vorizonta1 Section	Active	TVD	1280			Line
	Period	TV	1286	1312	—	Line
	VBP	TVBP	2	12	—	Line
	VFP	TVFP	2	16	—	Line
	VSYNC	FTPW	2	4	—	Line

Table 7.1-1 Power On Sequence Timing

Symbol	Value			Unit	Remark
	Min.	Typ.	Max.		
TOn1	0			mS	
TOn2	0			mS	
TOn3	0			mS	
TOn4	0			mS	
T2		No limit		uS	
T3	0			mS	
T4	10			mS	
T5	20			mS	
T6	0		T4	mS	
T7	10			uS	
T8	120			mS	

7.1.2 Power ON- PCCS[1:0] =H,L Mode Sequence

Application Power: IOVCC, VCI

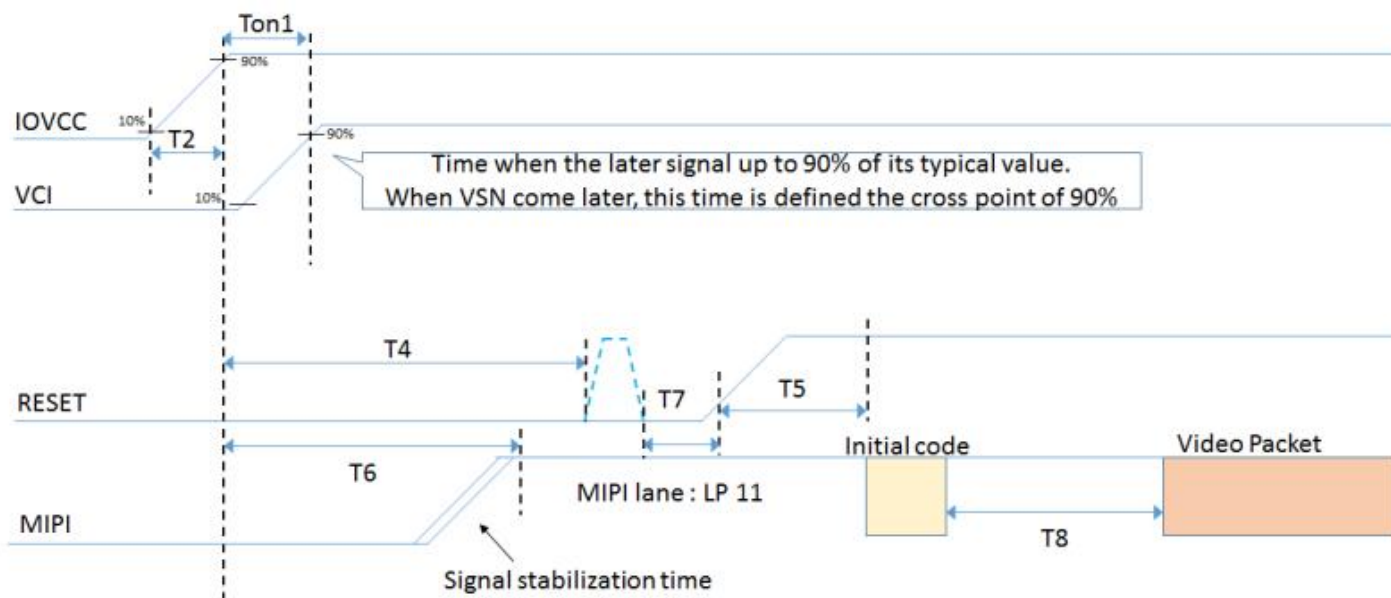


Figure 7.1.2-1: Power On-PCCS[1:0]= H,L mode sequence

Note1: Unless otherwise specified, timings herein show cross point at 50% of signal/power level.

Note2: This power-on sequence is based on adding schottky diode on VGL pin to ground.

七、驱动参数

Electrical Specifications

NO.	Item	Min	Typ	Max	Unit
1	Vcom voltage	-2.08	-1.58	-1.08	V
2	Frame Rate	55	60	65	Hz
3	VGH voltage	15.6	16	16.5	V
4	VGL voltage	-12.5	-12	-11.5	V
5	VDD	3.3	3.3	3.3	V