



韵唐光电

SPECIFICATION FOR



LCM

☐ Preliminary Specification

☒ Final Specification



Customer Approve:

QC 品质 : _____

R&D 研发 : _____

Approved 批准: _____

产品型号(Description): YT097IBEXL002-A

Compile by 编制	Quality/Engineer 品质/工程	Checked 审核	Approved 批准
冯广	蔡琴	黄华政	

地址 (Address) : 广东省深圳市光明新区白花村富
民大道朋凯工业园 B 栋 1-2 楼

联系人电话 (TEL) : 15818645188 Mr 王



韵唐光电

REVISION RECORD

REV NO	REV DATE	CONTENTS	REMARKS
V.0	2021-05-11	First Release	



韵唐光电

SPECIFICATION FOR



LCM

Table of contents

1.0	General Description.....	4
2.0	Absolute Maximum Ratings.....	5
3.0	Optical Characteristics.....	6
4.0	Power On/Off Sequence.....	9
5.0	Electrical Characteristics.....	11
6.0	Reliability Test Items.....	17
7.0	Interface Pin Connection.....	18
8.0	Outline Dimension.....	20
9.0	Package specification.....	21
10.0	General Precaution.....	22



韵唐光电

SPECIFICATION FOR QLED LCM

1.0 General description

1.1 Introduction

YT097IBEXL002-A is **QLED** model a color active matrix thin film transistor (TFT) liquid crystal display (LCD) that uses amorphous silicon TFT as a switching device. This model is composed of a TFT LCD panel, a driving circuit and a back light system. This TFT LCD has a **10.1 (16:10) inch** diagonally measured active display area with **XGA(768 horizontal by 1024 vertical pixel array)** resolution. The TFT-LCD panel used for this module is adapted for a low reflection and higher color type.

1.2 Features

- 4 lanes MIPI Interface
- Data enable signal mode
- 8-bit color depth, display 16.7M colors
- Low driving voltage and low power consumption
- ROHS Compliant

1.3 General information

Item		Specification	Unit	Remarks
Outline Dimension		210.2(W)x164.2(H)x4.8(T)	mm	Tolerance: ± 0.3 mm
Display area		147.456(W) x 196.608(H)	mm	
Number of Pixel		768(H) x RGB x 1024(V)	pixels	
Pixel pitch		0.192(H) x 0.192(V)	mm	
Pixel arrangement		Pixels RGB stripe arrangement		
Display mode		Normally Black		
Surface treatment		IPS Film		
Weight		TBD (Typ.)	gram	
Back-light		Single LED (Side-Light type)		
Power Consumption	B/L System	2.856(Max.)	watt	
Driver IC		-		*Using IC
Polarizer : zhuyou		Up: 0° sand surface Down 90° smooth surface	pcs	



韵唐光电

SPECIFICATION FOR



LCM

1.4 Mechanical Information

Item		Min.	Typ.	Max.	Unit
Module Size	Horizontal(H)	209.9	210.2	210.5	mm
	Vertical(V)	163.9	164.2	164.5	mm
	Depth(D)	4.5	4.8	5.1	mm

2.0 ABSOLUTE MAXIMUM RATINGS

2.1 Electrical Absolute Rating (GND=AGND=0V)

Parameter	Symbol	Spec.			Unit	Note
		Min.	Typ.	Max.		
Interface Supply Voltage	IOVCC	-0.3	-	+3.6	V	
Logic Supply Voltage	VCI	-0.3	-	+6.6	V	
Analog Supply Voltage	VCIP	-0.3	-	+6.6	V	
High speed interface Supply Voltage	VCCH	-0.3	-	+6.6	V	
Positive Voltage input	AVDD	-0.3	-	AVDD+0.5	V	
Negative Voltage input	AVEE	0	-	-6.6	V	
Power Supply Voltage	VGH	-0.3	-	+25	V	
Power Supply Voltage	VGL	0	-	-16	V	
Operation Temperature	TOPR	-20	-	+70	°C	
Storage Temperature	TSTG	-10	-	+60	°C	

Note: (1) All of the Voltages listed above are with respect to GND=0V.



韵唐光电

SPECIFICATION FOR



LCM

2.2 TFT LCD Power Supply Voltage

Parameter	Symbol	Min.	Typ.	Max.	Unit
Supply Voltage	VCI	-	-	-	V
	IOVCC	-	1.8	-	V
	AVDD	-	10	-	V
	AVEE	-	-	-	V

2.3 Back-light Unit

Parameter	Symbol	Min	Typ	Max.	Unit	Note
LED Current	I _L	-	-	-	mA	Ta=25℃
LED Voltage	V _L	-	-	-	V	Ta=25℃
LED Life-time	h	20000	-	-	V	Ta=25℃, If=20mA

2.4 Environment Absolute Rating

Item	Symbol	Min.	Max.	Unit	Note
Operating Temperature	Topa	-20	70	℃	
Storage Temperature	Tstg	-30	80	℃	



3.0 OPTICAL CHARACTERISTICS

3.1 Optical Specifications

Item	Symbol	Temp	Condition	Min	Typ	Max	Unit	Remark
Viewing Angle range	Horizontal	θ_{L}	CR > 10	75	80	--	Deg	Note (1,2)
		θ_{R}		75	80			
	Vertical	θ_{U}		75	80	--	Deg	
		θ_{D}		75	80			
Luminance Contrast ratio		CR	$\theta = 0^{\circ}$	700	900	--	--	Note (1,2)
Brightness		YL		-	TBD	--	Cd/cm2	Note (4,5)
Transmittance		T(%)	$\theta = 0^{\circ}$	--	4.9	--	%	
Color Gamut (C light)				--	70.8	--	%	
Reproduction of color (C-light)	White	Xw	$\theta = 0^{\circ}$	-0.02	0.292	+0.02		Note (1,4)
		Yw			0.323			
	Red	Rx			0.660			
		Ry			0.318			
	Green	Gx			0.255			
		Gy			0.574			
	Blue	Bx			0.137			
		By			0.095			
Response Time (Rising + Falling)	Trt		Ta= 25° C $\theta = 0^{\circ}$	--	30	40	ms	Note (1,3)
Opetical View Direction			ALL					Note (1)

3.2 Measuring Condition

Measuring surrounding: dark room

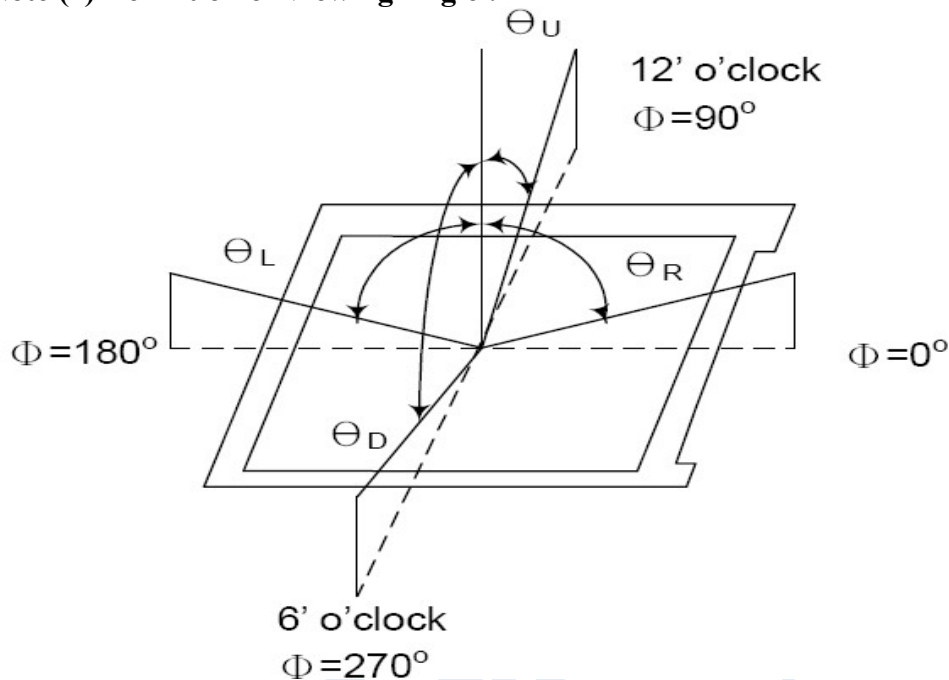
Ambient temperature: 25±2℃

15min. warm-up time.

3.3 Measuring Equipment

FPM520 of Westar Display technologies, INC., which utilized SR-3 for Chromaticity and BM-7 for other optical characteristics. Measuring spot size: 20 ~ 21 mm

Note (1) Definition of Viewing Angle :



Note (2) Definition of Contrast Ratio (CR):

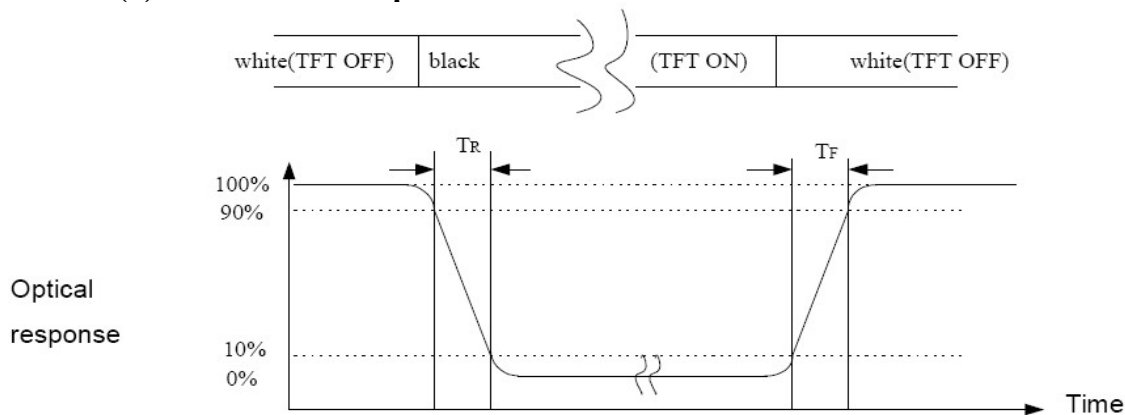
Measured at the center point of panel

Luminance with all pixels white

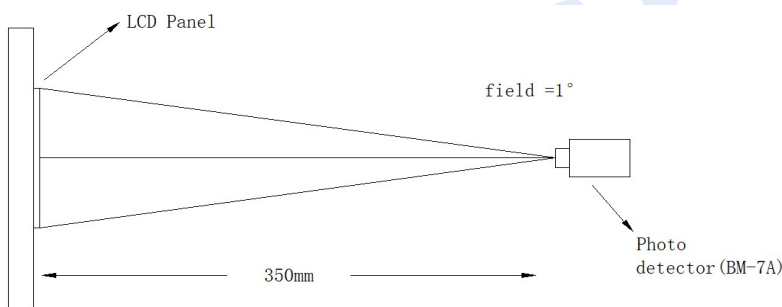
CR = $\frac{\text{Luminance with all pixels white}}{\text{Luminance with all pixels black}}$

Luminance with all pixels black

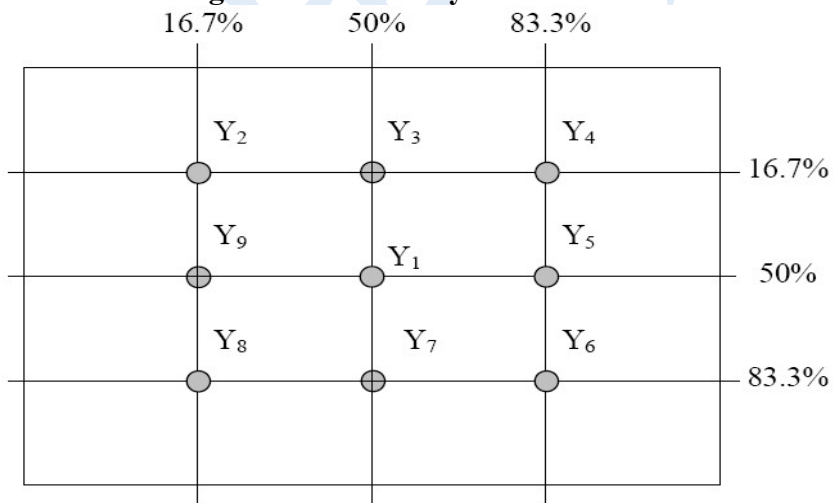
Note (3) Definition of Response Time: Sum of TR and TF



Note (4) Definition of optical measurement setup



Note (5) Definition of brightness uniformity



$$\text{Luminance uniformity} = \frac{(\text{Min Luminance of 9 points})}{(\text{Max Luminance of 9 points})} \times 100\%$$



韵唐光电

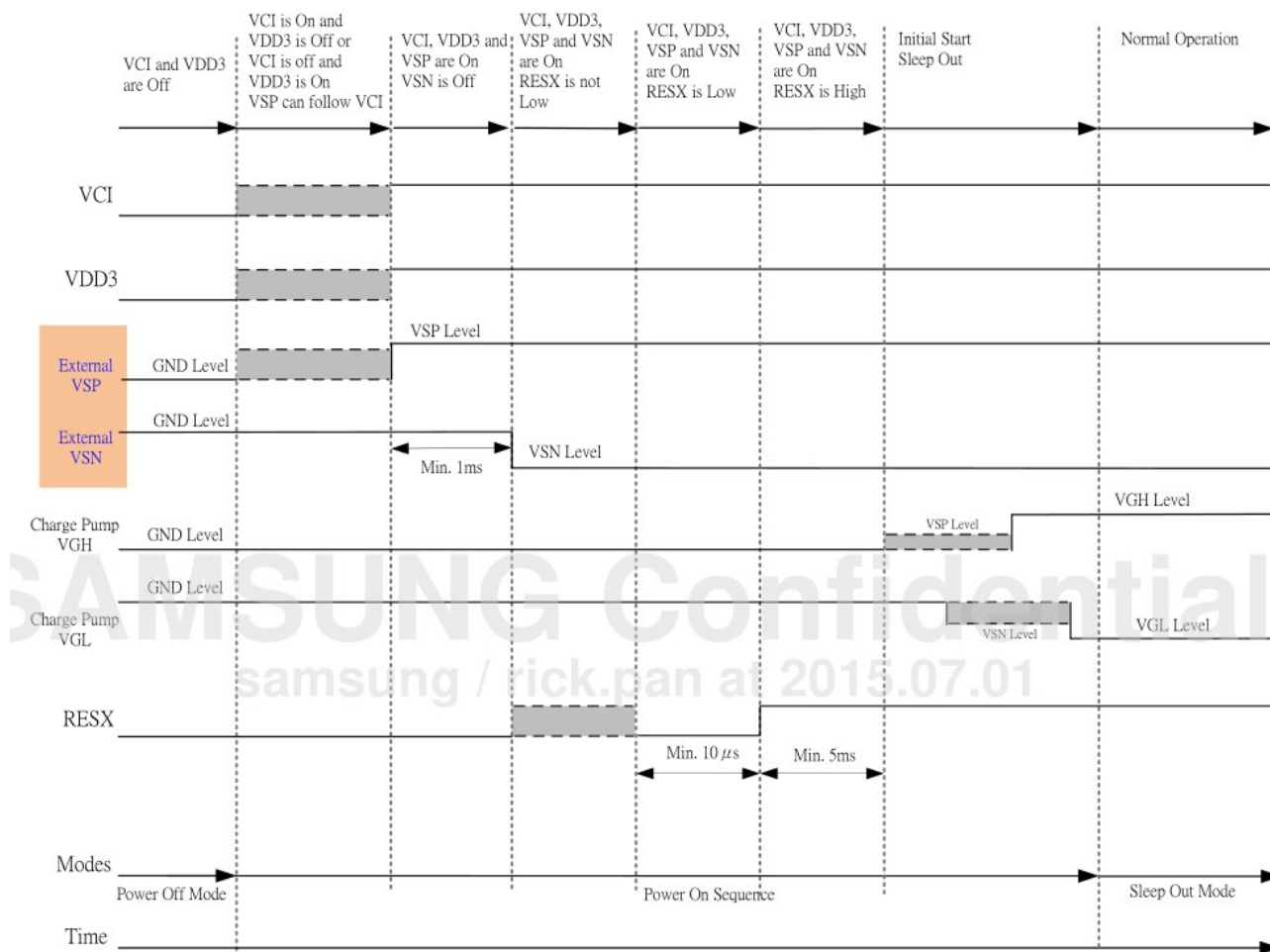
SPECIFICATION FOR



LCM

4.0 Power On/Off Sequence

To prevent the device damage from latch up, the power on/off sequence shown Below must be followed.



Power On Sequence

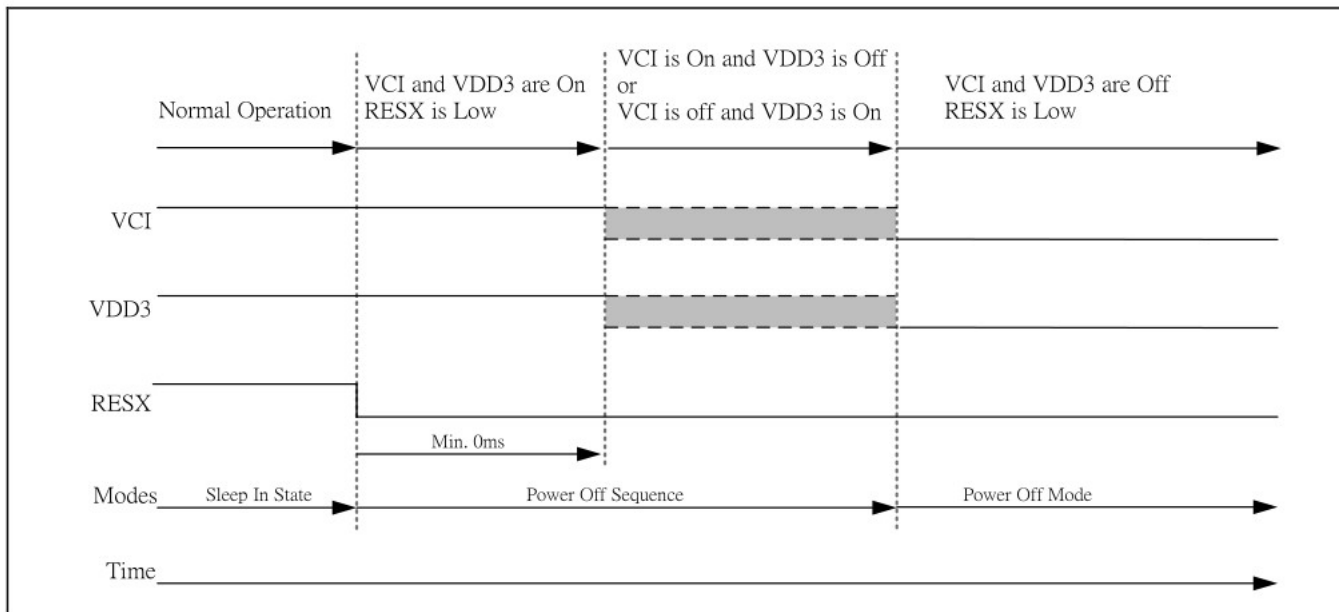


韵唐光电

SPECIFICATION FOR



LCM



Power Off Sequence

5.0 ELECTRICAL CHARACTERISTICS

5.1 DC characteristics

Parameter	Symbol	Condition	Specification			Applicable Pin	Unit	Note
			Min.	Typ.	Max.			
Power Supply Voltage	VCI	-	2.6	3.3	5.5	VCI	V	
	VDD3	-	1.65	1.80	3.30	VDD3		
	VSP	Power Mode A,C	4.5	5.5	6.0	VSP		1,3
	VSN	Power Mode A,C	-6.0	-5.5	-4.5	VSN		1,3
	VGH	Power Mode C	9.0	-	17	VGH		3
	VGL	Power Mode C	- 32-VGH	-	-6.0	VGL		3
	OTPV _{PP}	OTP Program	7.25	7.5	7.75	VPP		

NOTE: Ta = - 30 to 70°C

1. While using Power Mode A, external device supplies VSP/VSN to S6D7AA0 source driver and internal VGH/VGL booster. S6D7AA0 uses internal VGH/VGL as the power of ASG driver.
2. While using Power Mode B, S6D7AA0 uses SMPS VSP and SMPS VSN as the power of source driver and internal VGH/VGL booster. S6D7AA0 uses internal VGH/VGL as the power of ASG driver.
3. While using Power Mode C, external device supplies VSP/VSN/VGH/VGL to S6D7AA0 source driver and ASG driver.

5.2 AC characteristics

Reset input timings

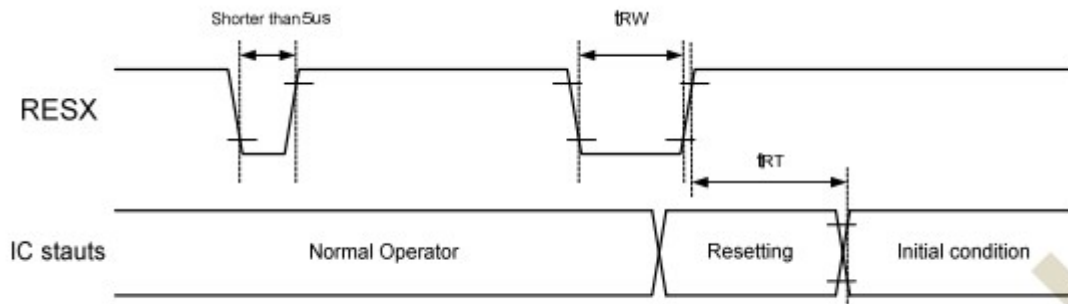


Figure 11.1: Reset input timings

Symbol	Parameter	Related pins	Min.	Max.	Unit
t_{RW}	Reset pulse width ⁽²⁾	RESX	10	-	μs
t_{RT}	Reset complete time ⁽³⁾	-	-	5 (Note 5)	ms
		-	-	120 (Note 6, 7)	ms

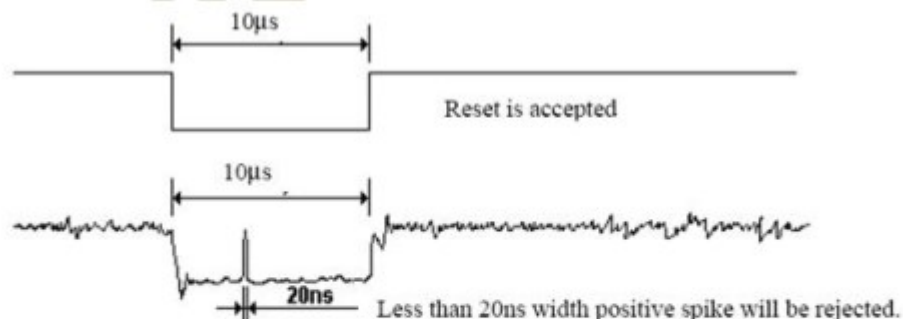
Note: (1) The reset complete time also required time for loading ID bytes from OTP to registers. This loading is done every time when there is HW reset cancel time (t_{RT}) within 5 ms after a rising edge of RESX.

(2) Spike due to an electrostatic discharge on RESX line does not cause irregular system reset according to the table below.

RESX Pulse	Action
Shorter than 5 μs	Reset Rejected
Longer than 10 μs	Reset
Between 5 μs and 10 μs	Reset Start

(3) During the resetting period, the display will be blanked (The display is entering blanking sequence, which maximum time is 120 ms, when Reset Starts in Sleep Out –mode. The display remains the blank state in Sleep In –mode) and then returns to Default condition for H/W reset.

(4) Spike Rejection also applies during a valid reset pulse as shown below:



(5) When Reset is applied during Sleep In Mode.

(6) When Reset is applied during Sleep Out Mode.

(7) It is necessary to wait 5msec after releasing RESX before sending commands. Also Sleep Out command cannot be sent for 120msec.



韵唐光电



5.3 Input timing table

Parameter	Symbol	Min.	Typ.	Max	Unit	Note
Horizontal Display Area	thd	768			DCLK	
DCLK frequency	felk	-	52.5	-	MHz	
HSD Period	th	-	832	-	DCLK	
HS pulse width	thpw	-	16	-	DCLK	
HS Back Porch(Blanking)	thbp	48			DCLK	
HS Front Porch	thfp	-	16	-	DCLK	

Parameter	Symbol	Min.	Typ.	Max	Unit	Note
Vertical Display Area	tvd	1024			TH	
VS period time	tv	-	1052	-	TH	
VS pulse width	tvpw	-	4	-	TH	
VS Back Porch(Blanking)	tvbp	12			TH	
HS Front Porch	tvfp	-	16	-	TH	

6.0 Reliability test items

Test Item	Test Conditions	Notes
High temperature Operation	Ta= +70℃, 96hrs	
Low temperature Operation	Ta= -20℃, 96hrs	
High Temperature Storage	Ta= +80℃, 96hrs	
Low Temperature Storage	Ta= -30℃, 96hrs	
Humidity Test	60℃ ,Humidity 90% ,96hrs	
Thermal Shock Test	-20℃,30min ~ +70℃,30min (30 cycle)	
Vibration Test(Packing)	Sine Wave 1.04G, 5~500Hz, XYZ 30min/each direction	
Static Electricity	Half-Sine, 100G, 6ms, ±XYZ, 3 cycle	



韵唐光电

SPECIFICATION FOR

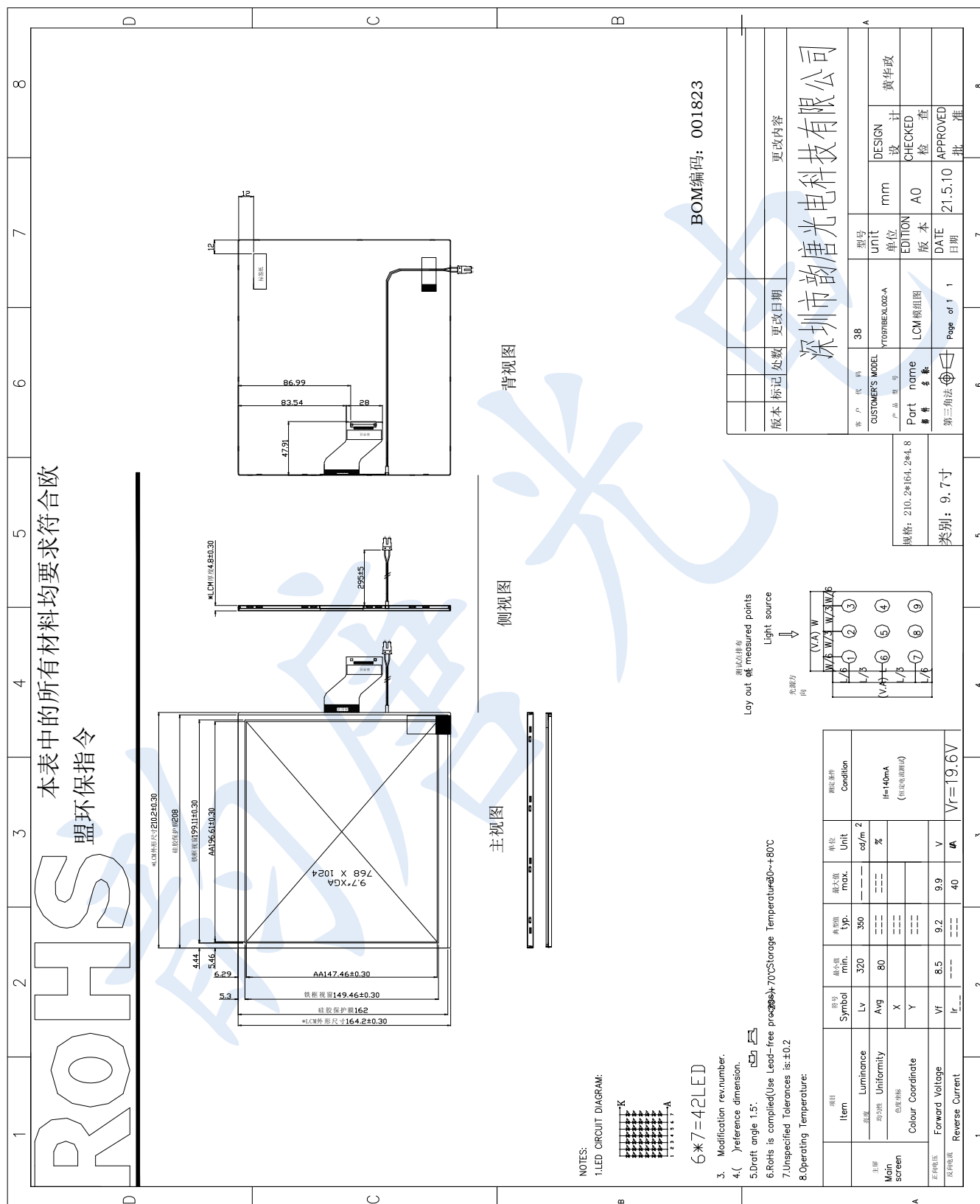


LCM

7.0 INTERFACE PIN CONNECTION

Terminal No.	Symbol	I/O	Functions
1	VCOM	P	Common voltage (NC)
2	DVDD	P	Power for Digital Circuit (1.8 V)
3	DVDD	P	Power for Digital Circuit (1.8 V)
4	NC	O	No connection
5	RESET	P	Global reset pin. Active Low to enter Reset State. Normally pull high. Connecting with an RC reset circuit for stability (1.8)
6	STBYB	I	Standby mode, normally pull high STBYB="1", normally operation STBYB="0", timing control, source driver will turn off (NC)
7	GND	P	Ground
8	MIPI_D0-	I	Negative MIPI differential data inputs0-
9	MIPI_D0+	I	Positive MIPI differential data inputs0+
10	GND	P	Ground
11	MIPI_D1-	I	Negative MIPI differential data inputs1-
12	MIPI_D1+	I	Positive MIPI differential data inputs1+
13	GND	P	Ground
14	MIPI_CLK-	I	Negative MIPI differential clock inputs
15	MIPI_CLK+	I	Positive MIPI differential clock inputs
16	GND	P	Ground
17	MIPI_D2-	I	Negative MIPI differential data inputs2-
18	MIPI_D2+	I	Positive MIPI differential data inputs2+
19	GND	P	Ground
20	MIPI_D3-	I	Negative MIPI differential data inputs3-
21	MIPI_D3+	I	Positive MIPI differential data inputs3+
22	GND	P	Ground
23	NC	O	No connection
24	AVDD	P	Power for Analog Circuit (9-13V)
25	NC	O	No connection
26	VGL	P	Gate OFF Voltage (NC)
27	NC	O	No connection
28	VGH	P	Gate ON Voltage (NC)
29	NC	O	No connection
30	GND	P	Ground

8.0 OUTLINE DIMENSION





韵唐光电

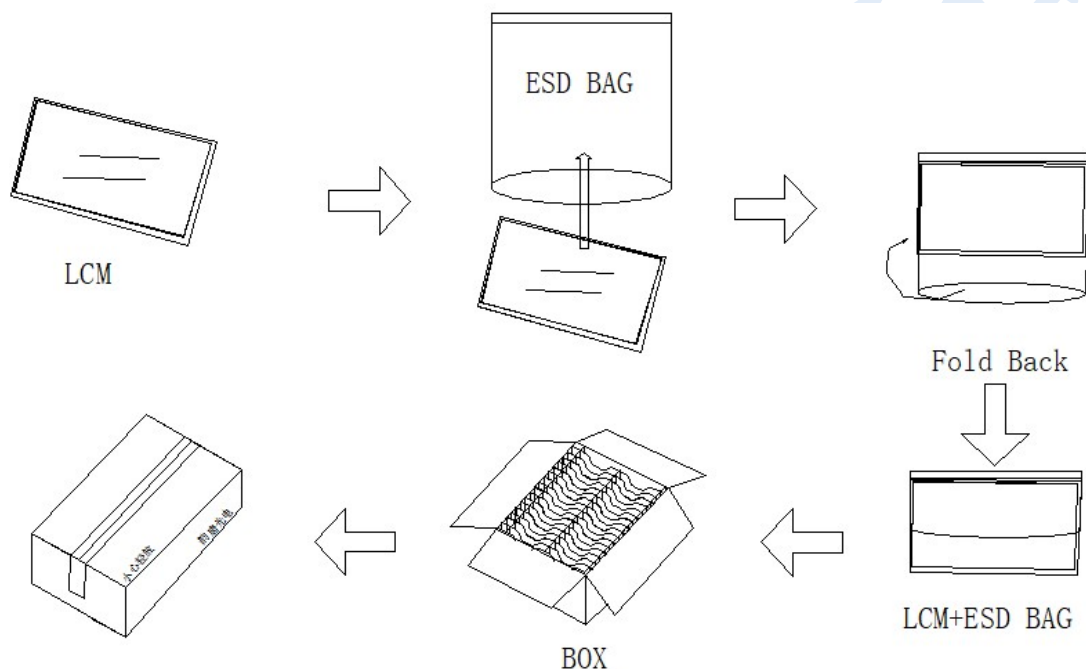


9.0 Package Specification

9.1 Packing form

LCM Moudle	LCM Qty. in the box	Box size	Note
YT097IBEXL002-A	50 pcs/box		

9.2 Packing assembly drawing



	Material	Notice
Box	Corrugated Paper Board	(AB Flute)
Partition/Pad	Corrugated Paper Board	(B Flute)
Corner Pad	Corrugated Paper Board	(AB Flute)
ESD bag	PE	



韵唐光电



10.0 General precaution

10.1 Use Restriction

This product is not authorized for use in life supporting systems, aircraft navigation control systems, military systems and any other application where performance failure could be life threatening or otherwise catastrophic.

10.2 Disassembling or Modification

Do not disassemble or modify the module. It may damage sensitive parts inside LCD module, and may cause scratches or dust on the display. YT does not warrant the module, if customers disassemble or modify the module.

10.3 Breakage of LCD Panel

10.3.1. If LCD panel is broken and liquid crystal spills out, do not ingest or inhale liquid crystal, and do not contact liquid crystal with skin.

10.3.2. If liquid crystal contacts mouth or eyes, rinse out with water immediately.

10.3.3. If liquid crystal contacts skin or cloths, wash it off immediately with alcohol and rinse thoroughly with water.

10.3.4. Handle carefully with chips of glass that may cause injury, when the glass is broken.

10.4 Electric Shock

10.4.1. Disconnect power supply before handling LCD module.

10.4.2. Do not pull or fold the LED cable.

10.4.3. Do not touch the parts inside LCD modules and the fluorescent LED's connector or cables in order to prevent electric shock.

10.5 Absolute Maximum Ratings and Power Protection Circuit

10.5.1. Do not exceed the absolute maximum rating values, such as the supply voltage variation, input voltage variation, variation in parts' parameters, environmental temperature, etc., otherwise LCD module may be damaged.

10.5.2. Please do not leave LCD module in the environment of high humidity and high temperature for a long time.

10.5.3. It's recommended to employ protection circuit for power supply.

10.6 Operation

10.6.1 Do not touch, push or rub the polarizer with anything harder than HB pencil lead.

10.6.2 Use fingerstalls of soft gloves in order to keep clean display quality, when persons handle the LCD module for incoming inspection or assembly.

10.6.3 When the surface is dusty, please wipe gently with absorbent cotton or other soft material.

10.6.4 Wipe off saliva or water drops as soon as possible. If saliva or water drops contact with polarizer for a long time, they may causes deformation or color fading.

10.6.5 When cleaning the adhesives, please use absorbent cotton wetted with a little petroleum benzine or other adequate solvent.

10.7 Mechanism

Please mount LCD module by using mouting holes arranged in four corners tightly.

10.8 Static Electricity

10.8.1 Protection film must remove very slowly from the surface of LCD module to prevent from electrostatic occurrence.

10.8.2. Because LCD module use CMOS-IC on circuit board and TFT-LCD panel, it is very weak to electrostatic discharge. Please be careful with electrostatic discharge. Persons who handle the module should be grounded through adequate methods.

10.9 Strong Light Exposure

The module shall not be exposed under strong light such as direct sunlight. Otherwise, display characteristics may be changed.